

BRAVE

MODEL: BRS105K

Place serial tag here

BRS105K

STUMP GRINDER OWNER'S MANUAL

Your Brave grinder is intended for outdoor-use only and can be used to remove many tree stumps and exposed root systems 9" high or lower to ground level. Approach the stump from the top, cutting straight down. Raise up out of the cut, move over in the desired direction, plunge again. Repeat these steps across the entire stump. Make sure you completely read and understand this manual before using the grinder for the first time.

WARNING

READ and **UNDERSTAND** this manual completely before using the grinder! Failure to properly operate, and maintain this grinder could result in serious injury or death to the operator or bystanders.

All machines have hazards associated with their operation. This stump grinder has certain special hazards, which you must be aware of. As an operator or owner you have a duty to be aware of these hazards and know preventive measures to take to avoid them. When reading this manual pay particular attention to avoiding these hazards.

In particular, be aware of the following:

- Know location of buried electrical and other utility lines.
- Do not allow children or untrained adults to operate.
- Wear eye protection and other personal protection against flying rocks and debris.
- Check that cutter wheel teeth are secured, sharp and not missing.
- Do not operate if tethered safety switch fails to stop engine when released away/pulled.
- Make sure no children or bystanders are within 75 feet (23 meters) of stump grinding operation.
- Protect cars, windows and other objects within 75 feet (23 meters) from flying debris.
- Be prepared for machine "kickback" when initially contacting the stump.
- Be aware of potential for carbon monoxide (CO) poisoning.
- Prevent fires/explosions from fueling.
- Do not attempt to perform adjustments, declog or clean unit while engine is running.
- Avoid burns from engine or hot exhaust.
- Avoid using in wet or icy conditions where falls may occur.
- Check all hardware is tight before operation.
- Clean area free from all rocks and stones.

Details about these hazards are found throughout the manual and are summarized at the end of the manual under "Important Safety Information."

STOP!

ADD ENGINE OIL & FUEL: Your stump grinder requires assembly and that you add engine oil to crankcase, fuel to tank. Review all assembly instructions prior to assembly.

INSPECT COMPONENTS: Closely inspect to make sure no components are missing or damaged. See the "Receiving Your Unit" section for instructions on whom to contact to report missing or damaged parts.

1-800-350-8739

WWW.BRAVEPRODUCTS.COM

20195 S. DIAMOND LAKE RD, SUITE 100, ROGERS, MN 55374

BRAVE TABLE OF CONTENTS

SECTION I: ASSEMBLY	3
STEP 1: INSPECT THE PACKAGING	4
STEP 2: WHEELS & AXLE	5
STEP 3: HANDLE TOWER	6
STEP 4: THROTTLE	7
STEP 5: HANDLE & WIRING CONNECTORS	8
SECTION II: SAFETY & OPERATION	9
YOUR KOHLER ENGINE	10
SAFE PRACTICES & GENERAL INFORMATION	11
QUICK START & TROUBLESHOOTING	12
ADJUSTING THE DRIVE BELTS	13
TETHERED SAFETY SWITCH	14
SUMMARY OF GENERAL SAFETY INFORMATION	15
SECTION III: PARTS & SCHEMATICS	19
SCHEMATICS	20
PARTS LIST	21
WARRANTY	22
WARRANTY REGISTRATION FORM	23



BRAVE
SECTION I
ASSEMBLY

BRAVE ASSEMBLY

CHECK THE PACKAGING

STEP 1: INSPECT THE PACKAGING

Open and unpack all items. Leave lots of working space. Inspect all parts.

The Stump Grinder is shipped in a crate. Leave the sides folded down and use as your work space.



NOTE: Upon inspection of parts, if you find any damage or missing parts please call BRAVE at **1 (800) 350-8739** or contact us via our website at **www.braveproducts.com**. We will replace any damaged or missing parts to you for free. **Please do not return to the store.**

ASSEMBLY BRAVE

STEP BY STEP INSTRUCTIONS

STEP 2: WHEELS & AXLE

1. Slide wheels on to the axle and install the lynch pins.
2. For pivot grinding, insert the pin through the wheel hub and axle to inhibit movement of desired wheel.
3. Pin only the axle to allow the wheel to spin freely.
4. During transport in trailer or pickup, pin both wheels for dual wheel brakes.
5. Install axle on to frame with two bolts and hardware provided.

PIN HOLE FOR WHEEL BRAKE

PIN FOR FREE ROLLING



BOLT AXLE TO FRAME



BRAVE ASSEMBLY

STEP BY STEP INSTRUCTIONS

STEP 3: HANDLE TOWER

1. Mount the handle tower with the bolts provided.
2. Connect the two wire connectors.



ASSEMBLY **BRAVE**

STEP BY STEP INSTRUCTIONS

STEP 4: THROTTLE

Note: Throttle tension adjustment nut. Tighten if throttle becomes loose

THROTTLE TENSION
ADJUSTMENT NUT



BRAVE ASSEMBLY

STEP BY STEP INSTRUCTIONS

STEP 5: HANDLE & WIRING CONNECTORS

1. Install the bow handle with the long bolt.
2. Connect the wiring connectors.



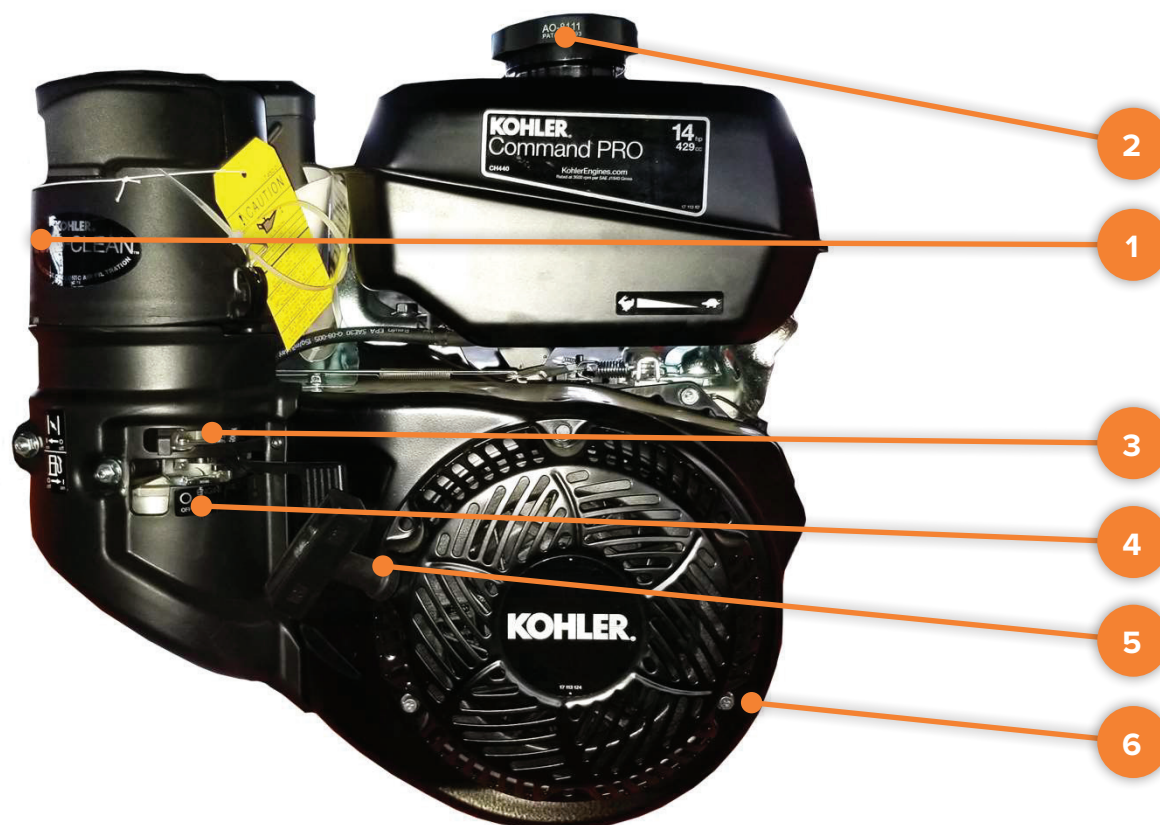
BRAVE

SECTION II
SAFETY & OPERATION

BRAVE SAFETY & OPERATION

YOUR KOHLER ENGINE

Read the Kohler engine manual supplied with your unit for full engine operation, safety, and maintenance instruction.



1	Air Filter - Summer and Winter Positions
2	Gas - Use Mid Grade or Higher
3	Choke - Left is On / Right is Off (Run Position)
4	Gas On / Off Switch - Left is Off / Right is On
5	Pull Starter - Pull Tight - Then Pull Start
6	Oil - Fill to mark 10W30, will not start if oil is low, has low oil shutoff protection. Two yellow caps are oil fill caps, use either one to fill oil.

SAFETY & OPERATION

SAFE PRACTICES & GENERAL INFORMATION

BRAVE

BEFORE PULL STARTING ENGINE

- Clear area of all people and property that could be damaged.
- Flying projectiles from operation can cause injury.
- Wear safety glasses, hearing protection, and gloves.
- Do not wear loose fitting clothes that could get stuck in the moving parts of the machine.
- Children should not run this equipment.
- Stay alert of your surroundings and persons that could appear in the area of operation.

THIS UNIT IS A DIRECT DUAL BELT DRIVE

- No clutch to slip or burn up, but your belts will need to be tightened and checked on a regular basis to maintain 100% cutting power.
- Tip the stump grinder up with the cutters off the ground when pull starting.

PERFORMANCE OPERATION

Approach the stump from the top, cutting straight down. Raise up out of the cut, move over in the desired direction, plunge again. Repeat across the entire stump. Move side to side to base off the stump. Adjust your bow handle for extra comfort during operation.

- For pivot grinding, set one of your wheel brakes on using the pin provided.
- To move the machine forward with the brake on, allow the rotating teeth against the stump to pull the unit forward.
- Tighten all bolts and teeth before each use. Teeth are not covered under warranty. Clean all stones and rocks away from the operating area, check for metal stakes and or nails in the tree stump before cutting.

NOTE: Kohler engines have a low oil shutoff to protect the engine, tilting the grinder higher than 12 inches at an angle can cause the oil to roll back and the low oil sensor will shut the engine off. Cut your stump 9 to 10 inches off the ground so you don't trip the sensor on the engine.

READ AND OBEY ALL WARNING LABELS ON THIS MACHINE

BRAVE

SAFETY & OPERATION

QUICK START & TROUBLESHOOTING

QUICK START SETUP

- Add 10W30 oil to the engine
- Add Gas
- If pivot grinding side to side, pin one wheel into pivot brake hole, other wheel free turning
- Insert tether into switch located on handle
- Half throttle (choke optional for cold starts)
- Tip the unit back with the cutters off the ground
- Pull start the engine

STUMP GRINDING

- Engine set on highest speed
- Hold tight on bow handle with both hands
- For plunge cutting, lower cutters into top of stump, grind to the depth of the cutters
- Raise cutters up and move over for next cut, repeat
- Pivot cutters from side to side to face off remainder of the stump

TROUBLESHOOTING

- **ENGINE WON'T START**
 - Ensure tether is inserted into switch located on handle properly. Check engine oil and gas level. Ensure red "slap" on/off switch, mounted on handlebar is spring loaded in the up/run position.
 - Unplug wire from On/Off switch located at the base of the handle (Step 5 of Assy Instructions - Pg 8) - if engine starts, replace the On/Off switch
 - Follow your engine manual for further troubleshooting
- **UNIT VIBRATES**
 - Check your cutters for missing or loose teeth
 - Check your cutter wheel pillar bearing mounting bolts
 - Check all belts and pulleys

SAFETY & OPERATION

BRAVE

ADJUSTING THE DRIVE BELTS

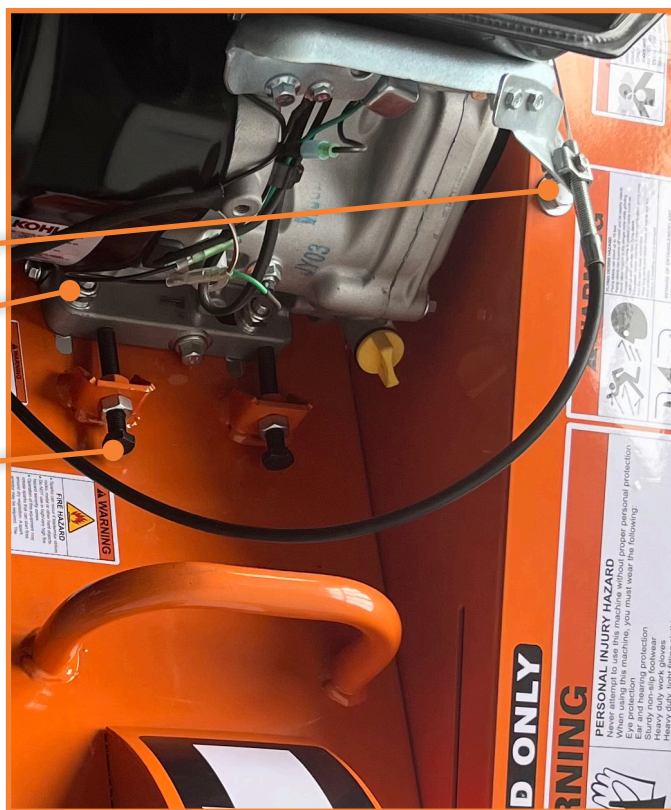
POWER LOSS AT CUTTER WHEEL

- Check your belt tension - slipping belts cause power loss
- Worn belts - replace
- Belt tension should be set at .25 inch movement above and below normal belt position
- Check your four engine mounting bolts, loose engine bolts will create loose belt tension

REMOVE FOUR COVER BOLTS
AND REMOVE BELT COVER.

LOOSEN 4 ENGINE BOLTS

ADJUST BOLTS EVENLY TO MOVE
THE ENGINE TO CHANGE BELT



NOTE: Use Brave OEM replacement belts for top performance.

BRAVE SAFETY & OPERATION

TETHERED SAFETY SWITCH

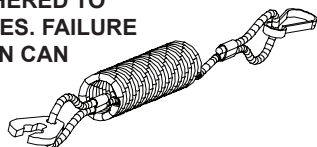
THIS STUMP GRINDER COMES EQUIPPED WITH A TETHER SWITCH TO ENSURE THE OPERATOR CAN TURN OFF THE ENGINE IN CASE OF AN EMERGENCY SITUATION.



1. Before operation, please ensure that the **Safety Rope (67)** is tethered to the **Safety Switch and the operator (66)**.
2. You can locate the tethered safety switch on the left side of the **Handle (62)**.

WARNING

OPERATORS SHOULD BE TETHERED TO THE SAFETY ROPE AT ALL TIMES. FAILURE TO FOLLOW THIS INSTRUCTION CAN RESULT IN SERIOUS INJURY.



Summary of Important Safety Information

This section provides a summary of the various safety procedures and measures that have been presented throughout the manual. Keep this summary handy and refer to it to refresh your memory about how to safely use your grinder.

WARNING

Carefully read and make sure you understand the following safety information before using the grinder. Improper use or maintenance of the grinder can result in serious injury or death from fire/explosion, carbon monoxide poisoning, lacerations, entanglement or burns. Damage can also occur to windows, siding, vehicles, and bystanders from chips and debris which can become projectiles.

General

- Read manual. Read this Owner's Manual and the engine Owner's Manual completely before attempting to use and service the grinder. Serious injury or death can result if safety instructions are not followed.
- Instruct operators. The grinder owner or rental company must instruct all operators in safe grinder set-up and operation. Do not allow anyone to operate the grinder who has not read the Owner's Manual and been instructed on its safe use. Make sure Owner's manual is with the grinder.
- Adults only. Only trained adults should operate and service the grinder. Do not let children operate.
- Under the influence. Never operate, or let anyone else operate, the grinder while under the influence of alcohol, drugs, or medication.
- Intended use. Carefully read about and understand the intended use of this grinder. Do not use for other purposes, as unforeseen hazards or equipment damage may result.
- Controls and safety labels. Learn how to use the machine and its controls safely. Understand and follow all safety labels.
- Weather. Never use in foul, bad or questionable weather, which causes a slippery ground condition.
- Prohibition Against Modifications. Never modify or alter the grinder in any way. Modifications can create serious safety hazards and will also void the warranty.
- Fuel/exhaust system. Never modify the exhaust system, fuel tanks, or fuel lines. Carbon monoxide poisoning, fire, or explosion could result.
- Guards. Do not operate grinder unless all guards and cover shields, which prevent access to moving parts and pinch points, are in place. Failure to guard the power transmission mechanisms may result in serious injury or death.

Safety – Before Use

Know how to operate

- Review safety rules. Before use of this grinder, review the "Safe Operation." If you have an implanted medical device, consult a physician before using this device.
- Know how to operate. Be thoroughly familiar with all controls and with the proper use of the equipment. Know how to stop the grinder quickly if needed.
- Utility marking. Call 811 or your local utility company for utility marking 3 days before stump grinding. Trees can grow on top of and around underground wiring that was installed many years before a tree was planted.

Getting Ready

- Flying debris. Clear area of objects such as stones, toys, steel wire, etc. that could become caught in moving machine parts and ejected as a projectile.
- Operate OUTSIDE only – dangerous carbon monoxide exhaust! Grinders give off carbon monoxide exhaust, a poisonous gas that can kill. You CANNOT smell it, see it, or taste it. ONLY run grinder OUTDOORS and at least 20 feet (6 m) from the home, away from windows, vents and air intakes, to allow proper ventilation. If you start to feel sick, dizzy, or weak while using the grinder, shut off the engine and get to fresh air RIGHT AWAY. NEVER run grinder engine inside homes, garages, sheds, or other semi-enclosed spaces. These spaces can trap poisonous gases.

- Cooling ventilation. The grinder needs adequate, unobstructed flow of air to allow for proper cooling of engine and grinder head. Do not allow debris to accumulate and block airflow.
- Transporting. During transporting, take precautions to make sure stump grinder will not tip over and cause a fuel leak hazard.
- Hot exhaust - fires. Exhaust from engine can be extremely hot and cause fire. Position muffler at least 7 feet from combustible objects during operation.
- Fire extinguisher. Keep a fire extinguisher rated “ABC” by the National Fire Protection Association nearby is always recommended when using gasoline operated machinery. Keep it properly charged and be familiar with its use.

Personal protective equipment

- Hearing protection. The use of ear plugs or other hearing protection device is recommended for those in close proximity to the grinder while it is operating.
- Eye protection. Wear ANSI approved (in EU, EN166 1F) eye protection when operating the grinder.
- Face protection. A helmet with a full-face visor or mesh visor with protective glasses is recommended.
- Loose / dangling. Loose or dangling apparel, jewelry or hair can become entangled in moving parts. Never wear jewelry or loose-fitting clothing when operating the grinder.
- Long pants. Wear long, heavy-duty pants to protect legs from ejected materials.

Gasoline Safety

Gasoline is highly flammable and explosive. You can be burned or seriously injured when handling fuel. Use extreme care when handling gasoline:

- Fuel outdoors. Fill fuel tank outdoors – never indoors. Gasoline vapors can ignite if they collect inside an enclosure. Explosion can result.
- Use approved container. Never pump fuel directly into engine at gas station. Static charge can build and ignite fuel. Use an UL approved fuel container to transfer gas to the engine.
- Running / hot engine. A running engine is hot enough to ignite fuel. Never add fuel or remove gas cap if engine is running or still hot. Stop the engine and allow to cool at least two minutes before adding fuel.
- Heat / flames / sparks. Keep sources of heat, flame, or sparks away while adding fuel.
- Don't fill to the top DO NOT overfill the gas tank. Allow at least 1” (2.5 cm) of empty space below the fill neck to allow for fuel expansion and operation on slopes.
- Don't fill to the top. Do not fill the gas tank to the top. Gasoline may spill when operating on a slope.
- Replace cap. Replace gas cap securely before starting engine.
- Spills. Clean up fuel spills immediately. Move grinder away from spilled fuel on the ground. Wipe fuel off engine and wait 5 minutes for excess fuel to evaporate before starting engine. Gas soaked rags should be disposed of properly.
- On skin / clothes. If gasoline is spilled on your skin or clothes, change clothes and wash skin immediately.
- Inspect fuel system. Check fuel system on a regular basis. Look for signs of leaks, deterioration, chafed or spongy fuel hose, loose or missing fuel hose clamps, damaged fuel tank, or a defective fuel shut-off valve. Do not start grinder until needed repairs have been completed.
- Gasoline storage. Store gasoline in a cool, dry place in an UL-approved, tightly sealed container away from children.

Safety – During Use

- Safety equipment / controls. Always operate the grinder with all safety covers, guards, and barriers in place and in good working order, and all controls properly adjusted for safe operation.
- Controls. Stay in the OPERATOR POSITION while actuating controls. Never attempt to ride or stand on stump grinder.
- Know how to stop. Know how to stop the grinder quickly if needed by releasing the tether switch. If this does not work, do the following in order until unit is stopped. 1. Use on/off switch on handle
2. Engage full choke by flooding the engine.
- “Kickback”. Machine can experience significant “kickback” when operating or first coming into contact with the stump.

- Slipping/Falling. Operating in wet or icy conditions could lead to losing your footing and slipping or falling.
- Damaged. Do not operate the grinder with damaged, missing, incorrectly adjusted, or broken parts. Check for gas leak before starting. After opening gasoline valve, smell for gas before starting engine. If you smell gas, DO NOT start engine. DO NOT light a match. DO NOT flip on an electrical switch. Exit area immediately and call fire department.
- Carbon monoxide exhaust. The running engine gives off carbon monoxide, a poisonous gas that can kill you. You CANNOT smell it, see it, or taste it. If you start to feel sick, dizzy, or weak while using the grinder, shut off the engine and get to fresh air RIGHT AWAY. See a doctor. You may have carbon monoxide poisoning.
- Other exhaust dangers. This product contains or emits chemicals known to the State of California to cause cancer, birth defects or other reproductive harm. Avoid inhalation of exhaust.
- Smoking/sparks. Never smoke near the running grinder, and never operate near sources of sparks or flames.
- Hot muffler. Never touch hot muffler or hot exhaust manifold. Exhaust and engine parts can be very hot and will burn you.
- Machine's moving parts. Keep hands, feet, and apparel away from drive belts, cutter wheel, and other moving parts. Never remove any drive belt or guard while the unit is operating. Contact with belt or rotating teeth will cause personal injury.
- Refueling. DO NOT refuel the engine until it has cooled at least two minutes.
- Malfunction during operation. Always shut the machine off if any unusual noise or vibration occurs.
- Vibration. Overexposure to machine vibration on a daily basis may lead to circulatory or nerve damage.
- Adjusting / repairing. Always turn off grinder and remove spark plug or spark plug wire before working on the grinder to prevent accidental starting. Disconnect battery (on electric models only).

Safety – After use

- Cool engine before storing. Let engine cool for at least five minutes before storing. A hot engine can be a fire hazard.
- Shut off fuel supply.
- Storage location. Store the grinder in a dry location away from sources of heat, open flames, sparks or pilot lights – such as water heaters, space heaters, furnaces, clothes dryers, or other gas appliances – EVEN IF the grinder's gas tank is empty. Residual gasoline could ignite.

Safety - Inspection/Maintenance

Inspect and maintain your grinder on a regular basis and repair as needed to keep it in safe working condition:

- Turn off grinder. Always turn off grinder and remove spark plug or spark plug wire before working on the engine or grinder to prevent accidental starting. Disconnect battery (on electric models only).
- Replace guards / shields. Make sure all guards and shields are replaced after servicing the grinder.
- Burns. Do not touch hot muffler. Muffler will be hot even if unit is stopped. Allow unit to cool before servicing.
- Replacement parts. If a part needs replacement, only use parts that meet the manufacturer's specifications. Replacement parts that do not meet specifications may result in a safety hazard or poor operation of the grinder and will void the warranty.

Special Safety Information on Static Electricity

Static electricity and filling gasoline:

Static electricity can initiate from ungrounded gasoline tanks or containers, from flowing gasoline, and from persons carrying a static electric charge

Static electricity on numerous occasions has explosively ignited gasoline vapors that were present during fueling processes, resulting in serious burns to nearby persons. To avoid static electricity while fueling, certain steps must be followed before and during the fueling process in order to minimize and safely dissipate static charge build-up.

Filling Portable Containers at Service Stations:

Use a portable container to fill grinder tank. Never fill the grinder's gas tank directly from the service station's fuel dispenser pump – the grinder's tank is not grounded and the high velocity flow of gasoline from a fuel pump can cause static electric build-up. Use an approved portable container to transfer gasoline to the grinder's tank.

- Use a portable container made of metal or conductive plastic. It will dissipate charge to ground more readily.
- Fill container on the ground. Never fill the portable gas container while it is sitting inside a vehicle, trailer, trunk, or pick-up truck bed. ALWAYS place container on the ground to be filled.
- Touch a grounded metal object before starting. Always dissipate static charge from your body before beginning the fueling process by touching a grounded metal object at a safe distance away from fuel sources.
- Keep nozzle in contact with container. Keep fuel dispenser nozzle in contact with the portable container at all times while filling at a service station. Do not use the nozzle lock-open device on the dispenser hose.

About static electricity and fueling

Many common objects can accumulate and retain a static electric charge. Objects made of nonconductive materials (e.g. plastics) easily accumulate and retain static electric charge, as can objects made of conductive material (e.g. metal, water) if they are not electrically grounded. The static electric charge on an object, such as a human body or plastic fuel tank/container, can reach as high as several thousand volts!

A static electric spark can be generated if the static electric charge stored on an object “jumps” to another, less charged object. Such a spark can ignite invisible gasoline vapors that are present during fueling situations.

Typical sources of static electric hazards during fueling

The following objects can accumulate a static electric charge and cause an ignition spark in typical fueling situations:

- Ungrounded tanks/containers. Any ungrounded fuel tank or container can accumulate a static electric charge as a result of contact with other objects or friction during transportation. This static electricity can discharge as a spark to the grounded gasoline dispenser nozzle, as the nozzle is first brought close to the tank/container at the beginning of the fueling process.
- Flowing gasoline. Most people are not aware that gasoline accumulates static electric charge while flowing through a hose or pipe. This charge then transfers to and accumulates in the gas tank or container that is being filled. The total amount of charge accumulation depends on the amount of gas pumped into the container, the speed with which it is pumped, and whether or not the tank/container is grounded. If sufficient static electric charge accumulates in the fuel tank or container during the fueling process, the tank/container may discharge a spark to the grounded gasoline dispenser nozzle.
- Persons. A person dispensing the gasoline can carry a static electric charge on their body, typically resulting from contact with their car seat or electronics. The static electricity can discharge as a spark between that person's hand and either the grounded dispenser nozzle or the fuel tank opening

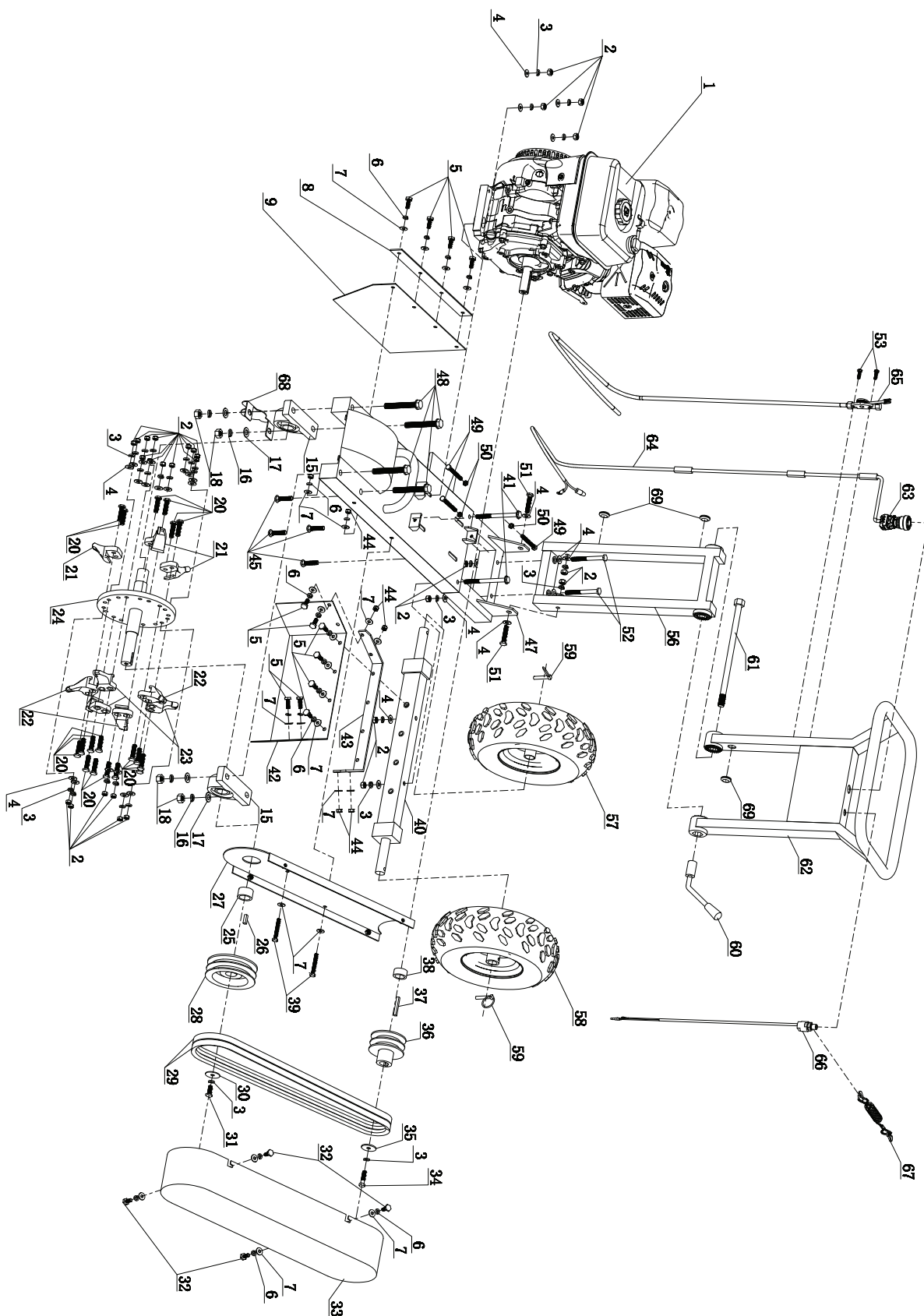
BRAVE

SECTION III

PARTS & SCHEMATICS

BRAVE PARTS & SCHEMATICS

SCHEMATICS



PARTS & SCHEMATICS

BRAVE

PARTS LIST

No.	Part #	Specification	Qty	No.	Part #	Specification	Qty
1	Call Kohler Dlr	Engine	1	41	BRSG41D21	Bolt M10 x 130	2
2	BRSG02D21	M10 locknut	32	42	BRSG42D21	Leather protect sheet	1
3	BRSG03D21	Spring washer 10	34	43	BRSG43D21	Leather protect sheet fixed plate	1
4	BRSG04D21	Washer Ø10*Ø20*1.5	4	44	BRSG44D21	M8 locknut	4
5	BRSG05D21	Bolt M8 x 25	4	45	BRSG45D21	Half-round head square neck bolt M10 x 45	4
6	BRSG06D21	Ø8 lockwasher	8	47	BRSG47D21	Frame	4
7	BRSG07D21	Washer Ø8 x Ø16 x 1.5	18	48	BRSG48D21	Inner six angle cylinder bolt M14 x 100	3
8	BRSG08D21	Protection sheet plate	1	49	BRSG49D21	Bolt M8 x 75	3
9	BRSG09D21	Protection sheet	1	50	BRSG50D21	M8 nut	3
15	BRSG15D21	Vertical seat bearing UCP206	2	51	BRSG51D21	Bolt M10 x 50	2
16	BRSG16D21	Ø14 lockwasher	4	52	BRSG52D21	Bolt M10 x 100	2
17	BRSG17D21	Washer Ø14*Ø28*2	4	53	BRSG53D21	Bolt M6 x 25	2
18	BRSG18D21	M14 locknut	4	56	BRSG56D21	Lower part of handle	1
20	OPG77720	Bolt M10 x 40	18	57	BRSG57D21	Right tire	1
21	OPG77721	Right cutter	3	58	BRSG58D21	Left tire	1
22	OPG77722	Left cutter	3	59	BRSG59D21	Ring type lock Ø8 x 45	2
23	OPG77723	Straight cutter	3	60	BRSG60D21	Handle adjusted bar M16	1
24	BRSG24D21	Cutter rotor	1	61	BRSG61D21	Bolt M16 x 300	1
25	BRSG25D21	Side spacer Ø30 x Ø40 x 22.5	1	62	BRSG62D21	Handle	1
26	BRSG26D21	Key 10 x 8 x 35	1	63	BRSG63D21	Key switch	1
27	BRSG27D21	Belt cover accessory plate	1	64	BRSG64D21	Stop wire	1
28	BRSG28D21	Rotor pulley Ø137	1	65	BRSG65D21	Throttle	1
29	BRSG29D21	Belt B-1445	2	66	BRSG66D21	Safety switch	1
30	BRSG30D21	Big washer Ø10 x Ø40 x 3	1	67	BRSG67D21	Safety rope	1
31	BRSG31D21	Bolt M10 x 25	1	68	BRSG68D21	Bearing Protect Cover	1
32	BRSG32D21	Bolt M8 x 20	4	69	BRSG69D21	Rubber ring	3
33	BRSG33D21	Belt cover	1	71	OPG77769	Set of 9 teeth with bolts	1
34	BRSG34D21	3/8 engine bolt	1				
35	BRSG35D21	Big washer Ø10 x Ø40 x 3	1				
36	BRSG36D21	Engine pulley Ø96	1				
37	BRSG37D21	Key 6.3 x 6.3 x 54	1				
38	BRSG38D21	Engine spacer Ø32 x 17.5	1				
39	BRSG39D21	Bolt M8 x 60	2				
40	BRSG40D21	Wheel axle	1				

REPLACEMENT TEETH,
POCKETS & BOLTS

VISIT WWW.CEISUPPLY.COM OR
CALL 800-333-5234 FOR ALL YOUR
REPLACEMENT TEETH, POCKETS
AND BOLT NEEDS.



20195 South Diamond Lake Road, Suite 100 • Rogers, MN 55374
Toll-Free: 800-350-8739 • Website: braveproducts.com • Email: sales@braveproducts.com

Dear Valued Customer:

The Brave product you just purchased is built with the finest material and craftsmanship. Use this product properly and enjoy the benefits from its high performance. By purchasing a Brave product, you show a desire for quality and durability. Like all mechanical equipment this unit requires a due amount of care. Treat this unit like the high-quality piece of machinery it is. Neglect and improper handling may impair its performance.

Thoroughly read the instructions and understand the operation before using your product. Always contact Brave Product Support at 1-800-350-8739 prior to having any service or warranty work performed, as some services performed by parties other than Brave approved service centers may void this warranty. This limited warranty is in lieu of any other warranty expressed or implied, written or oral and Brave assumes no other responsibility or liability outside that expressed within this limited warranty.

Limited Warranty for Brave Stump Grinder:

Models:

BRSG105K

	Consumer Warranty Period	Commercial Warranty Period
Weldments		
	1 years from date of purchase by user	90-day from date of purchase by user
Parts Only Warranty, No Labor		
	Brave will repair, replace, or supply any covered defective part at our option. Brave is 1-year parts only warranty no labor.	
Limited Wear Parts Warranty		
	In addition to the normal warranty, Brave shall warrant some normal wear items from defects in material or workmanship for a period of 30 days from the date of purchase by user. Normal wear items covered under this warranty are limited to: tires, belts, grease zerks, hoses, bearings, teeth, pockets, bolts, switches, wires. Routine maintenance items such as lubricants, tune ups are not covered under warranty.	
Engines		
	The engine warranty is covered under the terms and conditions as outlined by the engine manufactures warranty contained herein and is the sole responsibility of the engine manufacturer. Normal engine maintenance such as spark plugs, oil changes, air filters, adjustments, fuel system cleaning and obstruction due to build up is not covered by this Brave limited warranty.	

“**Consumer use**” means personal residential household use by a consumer. “**Commercial use**” means all other uses, including, but not limited to, use for commercial, income producing or rental purposes or when purchased by a business.

This limited warranty applies to the original purchaser of the equipment (verification of purchase, in the form of a receipt, is the responsibility of the buyer), is non-transferable, and covers parts. Parts will be replaced or repaired at no charge, except when the equipment has failed due to lack of proper maintenance. If a part is no longer available, the part may be replaced with a similar part of equal function. Any misuse, negligence, abuse, accidents, alteration or improper installation or operations will void warranty. Machines altered or modified without a Brave written consent may void this warranty policy immediately. This warranty shall apply to machines repaired by authorized Brave dealers only. Brave reserves the right to inspect and determine whether a part is to be replaced or repaired and is the sole decision of Brave. Brave will not provide for replacement of complete products due to defective parts. Any costs incurred due to replacement or repair of items outside of a Brave approved facility is the responsibility of the buyer and not covered under warranty. Transportation costs to and from service center and/or service calls are the responsibility of the customer. Brave reserves the right to improve or make product changes without incurring any obligation to update, refit or install on machines previously sold. Warranty requests must be submitted in writing within 30 days after machine.

This limited warranty specifically excludes the following: damage to the product due to misuse, mishandling and abuse, failure of parts due to damage caused by accident, fire, flood, windstorm, acts of God, applications not approved by Brave in writing, corrosion caused by chemicals, use of replacement parts which do not conform to manufacturer’s specifications, damage related to rodent and/or insect infestation and damage caused by vandalism. Additional exclusions: loss of running time, inconvenience, loss of income, or loss of use, including any implied warranty of merchantability of fitness for a specific use. Also, outdoor power equipment needs periodic parts and service to perform well, and this limited warranty does not cover instances when normal use has exhausted the life of a component or the engine.

This limited warranty does not cover any liability, personal injury or damage to surrounding property caused by failure of any part, misuse or inability to use the product, design, material or operation of unit. Alteration of the product, including safety features, shall void this warranty.

Repair or replacement of parts does not extend the warranty period. This limited warranty gives you specific legal rights. You may also have other rights that vary by state. Please have model number, item number and serial number on hand prior to making a warranty claim or inquiry.



Brave
Product Registration Form

YOUR INFORMATION

Full Name: _____
Last First M.I.

Address: _____
Street Address Apartment/Unit #

City State ZIP Code

Home Phone: _____ **Alternate Phone:** _____

Email _____

PURCHASED FROM

Company: _____

Address: _____
Street Address Apartment/Unit #

City State ZIP Code

MODEL INFORMATION

Purchase Date _____

Application Type ☐ Homeowner ☐ Commercial ☐ Rental

Model (i.e. BRPT704H) _____ **Serial #** (i.e. BRPT704HA123456) _____

Signature _____

Register your product online at www.braveproducts.com

BRAVE

1-800-350-8739

WWW.BRAVEPRODUCTS.COM

20195 S. DIAMOND LAKE RD, SUITE 100,
ROGERS, MN 55374



WARNING: This product can expose you to chemicals including soots, tars, and mineral oils, which are known to the State of California to cause cancer, and carbon monoxide, which is known to the State of California to cause birth defects or other reproductive harm. For more information go to www.P65Warnings.ca.gov.

PN 799546