



MBC190H

# Owner's Manual

MMBC190HA

Place serial number tag here



	<p><b>WARNING</b></p> <p>USE EXTREME CAUTION WHILE USING THIS EQUIPMENT. INJURY CAN OCCUR. READ CAREFULLY AND UNDERSTAND ALL ASSEMBLY AND SAFE OPERATION INSTRUCTIONS BEFORE OPERATING. FAILURE TO FOLLOW THE SAFETY RULES AND OTHER BASIC SAFETY PRECAUTIONS MAY RESULT IN SERIOUS PERSONAL INJURY.</p>	
--	--	--



## Table of Contents

1	INTRODUCTION .....	5
1.1	...Application .....	5
1.2	...Benefits.....	5
1.3	...Navigating This Manual.....	5
1.4	...Warnings and Safety Precautions .....	5
1.5	...Operation References/Terminology .....	8
1.6	...Control and Adjustment Locations.....	8
1.7	...Model Identification.....	9
1.8	...Further Assistance .....	9
2	SAFETY .....	10
2.1	...General Safety Rules.....	10
2.2	...PRODUCT-SPECIFIC SAFETY RULES .....	11
2.3	...ENGINE SAFETY PRECAUTIONS .....	11
2.4	...Safety Decals.....	14
2.5	...Training .....	15
2.6	...Preparation.....	16
2.7	...Operation .....	16
2.8	...Storage.....	17
3	PARTS BREAKDOWN .....	18
3.1	...Breakdown.....	18
3.2	...General Information.....	21
4	ASSEMBLY .....	21
4.1	...Final Set-up .....	23
5	OPERATING CONTROLS .....	25
5.1	...To Start Engine.....	25
6	MACHINE IDENTIFICATION COMPONENTS.....	26
7	OPERATION .....	26
7.1	...Drive operation and Operator Presence Levers.....	26
7.2	...Operator Presence Levers.....	26
7.3	...Blade Engagement.....	27
7.4	...Transporting – pushing Brush Cutter without engine running/power .....	27
7.5	...Parking Brake.....	27



7.6 ...Cutting/Mowing.....27

8     Transporting – pushing Brush Cutter manually without engine running/power ..... 28

    8.1 ...Transporting – Free Wheel.....28

9     MAINTENANCE AND LUBRICATION ..... 28

    9.1 ...Mower Blade.....29

    9.2 ...Mower Transmission belt .....29

    9.3 ...Mower Blade Belt .....31

    9.4 ...Mower Blade Belt tension.....33

    9.5 ...Cleaning your Brush Cutter .....33

    9.6 ...Cleaning the Cooling System .....33

    9.7 ...Dual Filter Element Air Cleaner.....33

    9.8 ...Engine Oil – 1.2 quart, (38.4 oz).....34

    9.9 ...Muffler .....34

    9.10 .Spark Plug.....35

10    Tire Care..... 35

    10.1 .Maintenance Schedule .....35

11    WARRANTY ..... 36

    11.1 .Warranty/Product Registration .....36

** WARNING****READ ENTIRE MANUAL BEFORE ATTEMPTING TO OPERATE MACHINE**

If incorrectly used, this machine can cause severe injury. Those who use and maintain this machine should be trained in its proper use, warned of its dangers, and should read the entire manual before attempting to set up, operate, adjust, or service this machine.

Read and keep this manual for future reference. This manual contains important information on **SAFETY, ASSEMBLY, OPERATION, AND MAINTENANCE**. The owner must be certain that all the product information is included with the unit. This information includes the **MANUAL, the REPLACEMENT PARTS, and the WARRANTIES**. This information must be included to make sure state laws and other laws are followed. This manual should remain with the product even if it is resold.

** WARNING****THE ENGINE EXHAUST FROM THIS PRODUCT CONTAINS CHEMICALS KNOWN TO THE STATE OF CALIFORNIA TO CAUSE CANCER, BIRTH DEFECTS OR OTHER REPRODUCTIVE HARMS.**

**IMPORTANT:** This unit is equipped with an internal combustion engine and should not be used on or near any unimproved forest-covered, brush covered, or grass-covered land unless the engine's exhaust system is equipped with a spark arrester meeting applicable local laws (if any). If a spark arrester is used, it should be maintained in effective working order by the operator.

In the state of California, a spark arrester is required by law (section 4442 of the California public resources code). Other states may have similar laws. Federal laws apply on federal lands. See your authorized service center for a spark arrester.



## 1 INTRODUCTION

Maxim Brush Cutters feature heavy gauge steel, double sided sharpened blade, and ruggedly built Hydro transaxle w/Enhanced Traction Control with easy-to-use intuitive controls. For additional durability, a Self-Adjusting Manual Clutch with an extra heavy-duty frame. It is this simple, yet sturdy design that makes Maxim Brush Cutters low maintenance and easy to use.

**Please read this entire manual before assembly and use. The manufacturer reserves the right to change, alter or improve the product and this document at any time without prior notice.**

### 1.1 Application

Brush Cutters in the rental industry must be able to withstand heavy use, rough handling, and transportation bruises, yet still use or rent tomorrow. These beefy Brush Cutters combine ease of operation and maintenance to make a Brush Cutter worthy of the Maxim name.

### 1.2 Benefits

- Powered by a Honda GXV390 engine
- Hydro transaxle w/Enhanced Traction Control provide ease of use, with having infinite variable speed forward and reverse.
- Heavy-duty Dual Sided, Reversible blade.
- 10 Gauge Heavy-duty steel deck.
- 4.80/4.00 - 8" Pneumatic Bar Lug tires.
- 2" Diameter Sapling Maximum Cut
- Ground maximum speed – 4 mph

### 1.3 Navigating This Manual

1. Use this manual to help familiarize yourself with safety, operation, adjustments, troubleshooting, maintenance, specifications, and warranty information. It is very important that you read this manual and follow the instructions to ensure safe operation of the attachment.
2. Please visit [www.maximmfg.com](http://www.maximmfg.com) for updated information.

### 1.4 Warnings and Safety Precautions

The safety of our customers and other's well-being is very important to us. Using this equipment is an important responsibility. Safe and effective use of the machine is the owner's responsibility.

- Read and follow all safety instructions.
- Maintain the machine according to directions and schedule included in this manual.
- Ensure that anyone who uses the machine is familiar with all controls and safety precautions.

**SPECIAL MESSAGES**

Please read all the information carefully to avoid injury and machine damage. This information alerts you to potential hazards that could hurt you or others.

**NOTE: General information is given throughout the manual that may help the operator in the operation or service of the machine.**

You will find important safety information in a variety of forms, including:

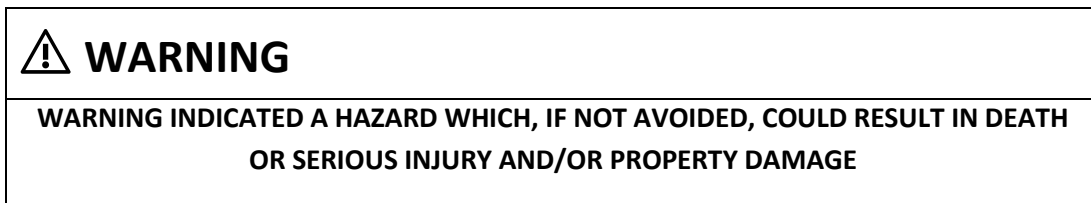
1. Safety labels – on the Brush Cutter
2. Safety messages – preceded by a safety alert symbol and one of the three signal words: **DANGER, WARNING, OR CAUTION.**

These signal words mean:

**DANGER:** You will be killed or seriously injured if you do not follow instructions



**WARNING:** You can be killed or seriously injured if you do not follow instructions.



**CAUTION:** You can be injured if you do not follow instructions.

 **CAUTION**

**CAUTION INDICATED YOU CAN BE HURT OR YOUR EQUIPMENT DAMAGED IF THE SAFETY INSTRUCTIONS THAT FOLLOW THIS SIGNAL WORD ARE NOT OBEYED.**

 **WARNING**


**CALIFORNIA PROPOSITION 65 WARNING**

**ENGINE EXHAUST FROM THIS PRODUCT CONTAINS CHEMICALS KNOWN TO THE STATE OF CALIFORNIA TO CAUSE CANCER, BIRTH DEFECTS, OR OTHER REPRODUCTIVE HARM.**

 **WARNING**

**YOU MUST READ, UNDERSTAND AND COMPLY WITH ALL SAFETY AND OPERATING INSTRUCTIONS IN THIS MANUAL BEFORE ATTEMPTING TO SETUP AND OPERATE YOUR MACHINE.**

**FAILURE TO COMPLY WITH ALL SAFETY AND OPERATING INSTRUCTIONS CAN RESULT IN LOSS OF MACHINE CONTROL, SERIOUS PERSONAL INJURY TO YOU AND/OR BYSTANDERS, AND RISK OF EQUIPMENT AND PROPERTY DAMAGE. THE TRIANGLE IN THE TEXT SIGNIFIES IMPORTANT CAUTIONS OR WARNINGS WHICH MUST BE FOLLOWED**

 **This symbol points out important safety instructions which if not followed could endanger your personal safety. Read and follow all instructions in this manual before attempting to operate this equipment.**

**BEFORE OPERATING ENGINE:**

**Please read this section carefully.** Read entire operating and maintenance instructions for this product. Failure to follow instructions could result in serious injury or death. Operate the machine according to the safety instructions outlined here and inserted throughout the text. Anyone who uses this machine must read the instructions and be familiar with the controls.

## Intended Use / Foreseeable Misuse

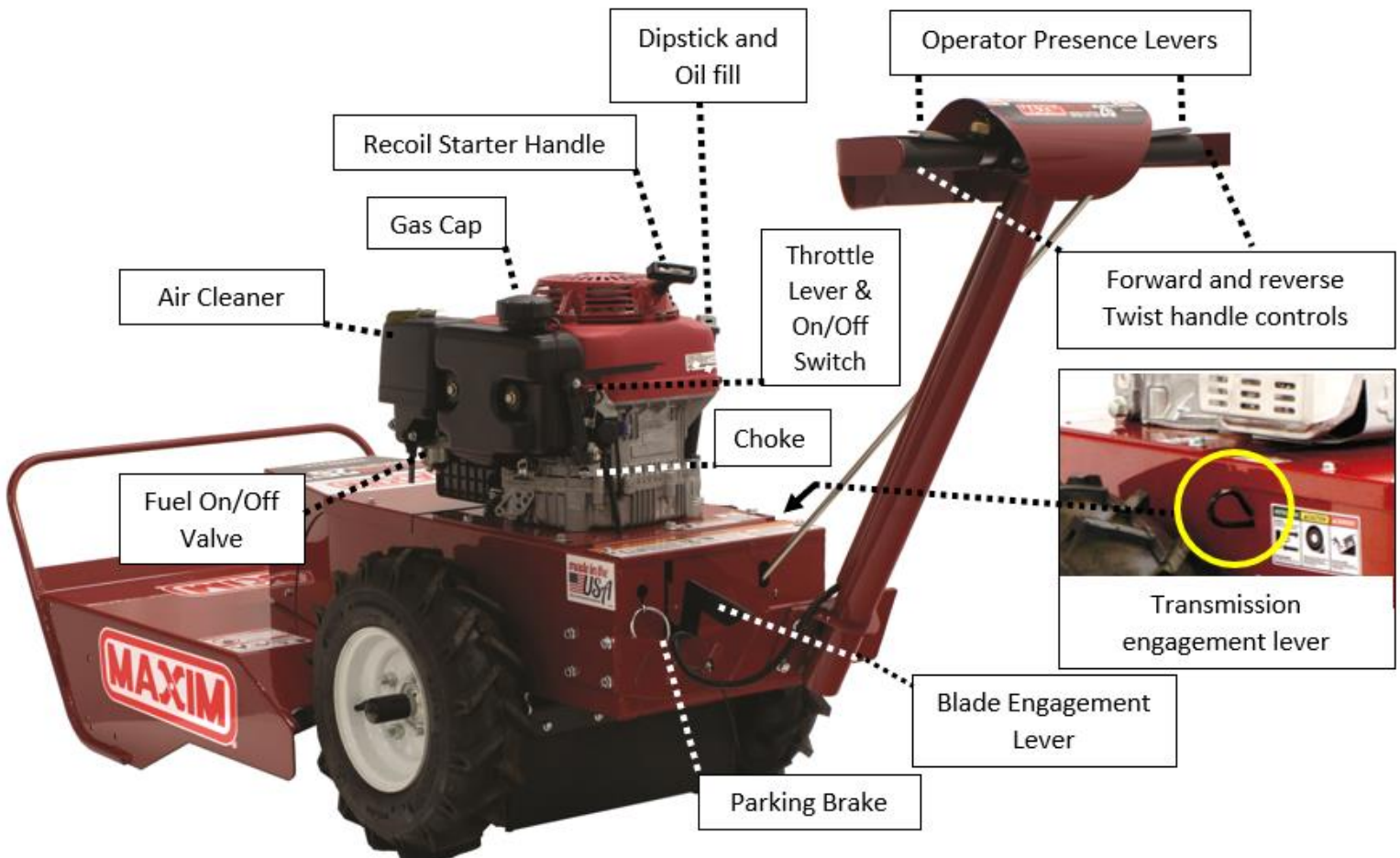
**IMPORTANT:** This is a motorized Brush Cutter that works by using a sharp rotating blade. It is pedestrian-controlled using hand controls that power the entire machine both forward and reverse. It uses a gasoline-fueled internal combustion engine to power the blade. It shall not be used for any other purpose.

## 1.5 Operation References/Terminology

References throughout this manual referred to as “Right” or “Left” are determined by being face-standing behind Brush mower and facing the direction the unit will operate while in use.

## 1.6 Control and Adjustment Locations

Familiarize yourself with the location of various controls and adjustments located on the unit.





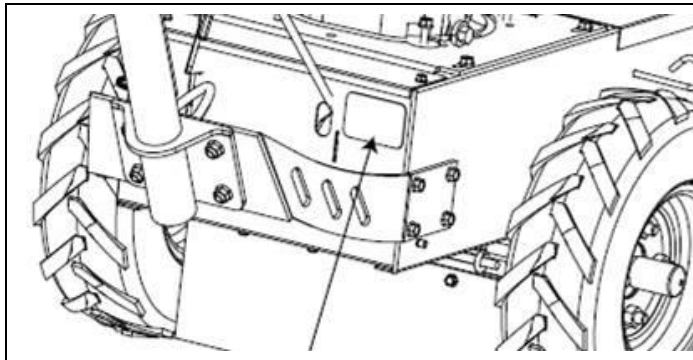
## 1.7 Model Identification

Please fill in your model and serial number below for future reference. This will help assist in prompt service when ordering parts and service from your local Maxim Dealer.

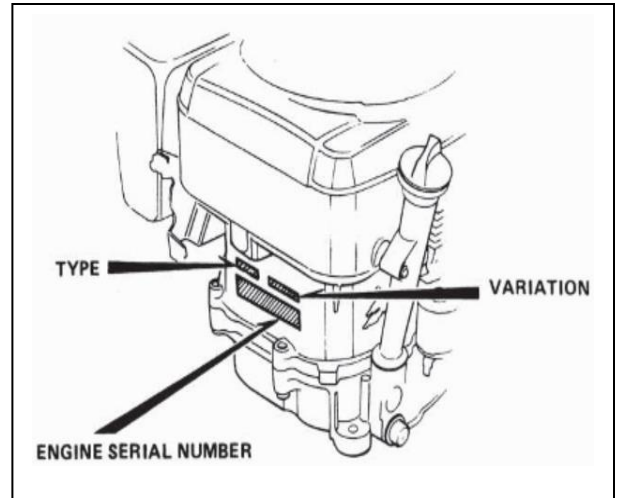
Brush Mower Model No. \_\_\_\_\_ Brush Mower Serial No. \_\_\_\_\_

Engine Model No. \_\_\_\_\_ Engine Serial No. \_\_\_\_\_

Refer to the image below for location of your serial number plate:



Brush Mower Serial Number location:



Please complete the Warranty/Product Registration at the time of purchase. You will need to complete the warranty/product registration form (pg. 37) with your new unit, or you may visit our website [www.maximmfg.com](http://www.maximmfg.com) and complete our online product registration form. We require this information so we can keep you updated with any important information about your Maxim Brush Cutter and provide you with the best customer service possible.

Contact your local Maxim Dealer for OEM replacement parts or contact our customer service department for assistance in parts, locating your local servicing dealer and more. Your local dealer is equipped and trained to handle service and repair for your Brush Cutter.

## 1.8 Further Assistance

Your dealer and all of us at Maxim want you to be pleased with your Brush Cutter. Should you require further assistance or have questions regarding your Brush Cutter, please contact your local dealer where you purchased your Brush Cutter. If you are unable to satisfy your needs by your local dealer, please contact us at:

Maxim  
20195 South Diamond Lake Road, STE 100  
Rogers, MN 55374  
800-621-2789  
[www.maximmfg.com](http://www.maximmfg.com)

## 2 SAFETY

### 2.1 General Safety Rules

- Read, understand, and follow all instructions on the machine and in the manual(s). Be thoroughly familiar with the controls and proper use of the machine before starting.
- Disengage all controls before starting the engine (motor).
- Use this equipment for its intended purpose only.
- Familiarize yourself with all the safety and operating decals on this equipment.
- Stop the engine (motor) when leaving the operating position.
- Do not put hands or feet near or under rotating parts.
- Only allow responsible individuals who are familiar with the instructions to operate the machine. Do not allow children to operate this machine. Do not allow adults to operate the machine without proper instruction.
- Thoroughly inspect the area where the machine is to be used and remove all foreign objects. Your mower can propel small objects at high-speed causing personal injury or property damage. Stay away from breakable objects, house windows, automobiles, etc.
- Wear appropriate clothing such as sturdy, rough-soled shoes (steel toe recommended) and close-fitting pants and shirt. Never wear sandals, sneakers, or open shoes, and never operate the machine with bare feet.
- Never leave the engine/mower running and unattended. Turn off blade, set parking brake, and stop engine before leaving the machine.
- Always wear safety goggles or safety glasses with side shields when operating the machine to protect your eyes from foreign objects which can be thrown from the unit.
- Always wear a protective hearing device.
- Always wear work gloves and sturdy rugged soled footwear. Wear footwear that will improve footing on slippery surfaces.
- It is advisable to wear protective headgear to prevent the possibility of being struck by small flying particles, or being struck by low hanging branches, twigs or other objects which may be unnoticed by the operator.
- Do not operate the machine without proper guards or safety protective devices in place.
- Operate only in daylight.
- Stop and do not operate if someone approaches.
- Do not operate product when fatigued or under the influence of alcohol, drugs or other medication which can cause drowsiness or affect your ability to operate machine safely.
- Watch for traffic when operating the Brush Cutter near, or when crossing roads.
- If the equipment should start to vibrate abnormally, stop the engine (motor), push down the throttle lever located on the engine to the **OFF** position.
- Regularly inspect the machine. Make sure parts are not bent, damaged or loose.
- Temperature of muffler and nearby areas may exceed 150° F (65° C). Allow muffler and engine areas to cool before touching.

- Prolonged exposure to noise and vibration from gasoline engine-powered equipment should be avoided. Take intermittent breaks and wear ear protection from engine noise as well as heavy work gloves to reduce vibration in hands.
- Keep all screws, nuts, and bolts tight.
- Do not transport the machine from one place to another with the engine running.
- Disconnect transmission engagement lever on right side of unit base, see page 8.
- Always turn off fuel supply valve on engine before transport, see page 8.
- Check local regulations for age restrictions on use of this machine.

## 2.2 PRODUCT-SPECIFIC SAFETY RULES

- Do not operate the machine on terrain with large rocks and/or foreign objects which can damage the equipment.
- After striking a foreign object, stop the engine by pushing down the throttle lever, located on the engine, to the **OFF** position. Inspect the machine for damage. If damaged, repair before starting and operating the machine.
- If an object becomes lodged between the blade and the deck, shut off engine by pushing down the throttle lever, located on the engine to the **OFF** position and disconnect spark plug wire to prevent accidental start up. Allow the machine to cool before attempting to remove the foreign object.
- Keep the area of operation clear of all persons, particularly small children, and pets.

## 2.3 ENGINE SAFETY PRECAUTIONS

### **WARNING**

**ENGINES GIVE OFF CARBON MONOXIDE, AN ODORLESS, COLORLESS, POISONOUS GAS. CARBON MONOXIDE MAY BE PRESENT EVEN IF YOU DO NOT SMELL OR SEE ANY ENGINE EXHAUST. BREATHING CARBON MONOXIDE CAN CAUSE NAUSEA, FAINTING OR DEATH, IN ADDITION TO DROWSINESS, DIZZINESS AND CONFUSION.**

**IF YOU EXPERIENCE ANY OF THESE SYMPTOMS, SEEK FRESH AIR AND MEDICAL ATTENTION IMMEDIATELY.**

### **CAUTION**

**HOT GASES ARE A NORMAL BY-PRODUCT OF A FUNCTIONING INTERNAL COMBUSTION ENGINE. FOLLOW ALL SAFETY INSTRUCTIONS TO PREVENT BURNS AND FIRES.**

**DO NOT ALTER/MODIFY ENGINE:**

**NEVER ALTER OR MODIFY THE ENGINE FROM THE FACTORY. SERIOUS INJURY OR DEATH MAY OCCUR IF ENGINE IS MODIFIED OR ALTERED.**

**WHEN WORKING ON OR REPLACING PARTS FOR THE ENGINE OR PRODUCT, YOU MUST SHUT OFF ENGINE BY PUSHING DOWN THE THROTTLE LEVER, LOCATED ON THE ENGINE TO THE **OFF** POSITION.**

**PREVENTING CARBON MONOXIDE POSIONING**

- Always start and run engine outdoors. Do not start or run engine in an enclosed area, even if doors or windows are open.
- Never try to ventilate engine exhaust indoors. Carbon monoxide can reach dangerous levels very quickly.
- Never run engine outdoors where exhaust fumes may be pulled into a building.
- Stop the engine (motor) when leaving the operating position.
- Never run engine outdoors in a poorly ventilated area where the exhaust fumes may be trapped and not easily taken away. (Examples include in a large hole or areas where hills surround your working area.)
- Never run engine in an enclosed or partially enclosed area. (Examples include buildings that are enclosed on one or more sides, under tents, car ports or basements.)
- Do not change the engine governor settings or over-speed the engine.

**GASOLINE FIRES AND HANDLING FUEL SAFELY**

**⚠ Warning gasoline is highly flammable and explosive**

**You can be burned or seriously injured when handling fuel. Use extreme care when handling gasoline. They are flammable and vapors are explosive.**

- When storing extra fuel be sure that it is in an appropriate container and away from any fire hazards.
- Prevent fire and explosion caused by static electric discharge. Use only nonmetal, portable fuel containers approved by the Underwriter's Laboratory (U.L.) or the American Society for Testing & Materials (ASTM).
- Always fill fuel tank outside in a well-ventilated area. Never fill fuel tank with fuel indoors. (Examples include basement, garage, barn, shed, house, porch, etc.) Never fill tank near appliances with pilot lights, heaters, or other ignition sources. If the fuel must be drained, this should be done outdoors. The drained fuel should be stored in a container specifically designed for fuel storage or it should be disposed of carefully.
- Never remove the fuel cap or add fuel with the engine running. Stop engine and allow to cool before filling.
- Do not smoke while using engine or around fuel.
- Never drain fuel from engine in an enclosed area.
- Do not store engine with fuel in fuel tank indoors. Fuel and fuel vapors are highly explosive.



- Always wipe up excess (spilled) fuel from engine before starting. Clean up spilled fuel immediately. If fuel is spilled, do not start the engine, but move product and fuel container from area. Clean up spilled fuel and allow to evaporate and dry after wiping and before starting.
- Allow fuel fumes/vapors to escape from the surrounding air before starting the engine.
- Test the fuel cap for proper installation before starting and using engine.
- Always run the engine with fuel cap properly installed on the engine.
- Never smoke while refilling engine fuel tank.
- Never pour fuel from engine fuel tank.
- Never siphon fuel by mouth to drain fuel tank.
- Always have an adult fill the fuel tank and never allow children to fill the engine.
- Never allow anyone under the influence of drugs or alcohol to fill the engine.
- When storing gasoline or equipment with fuel in the tank, store away from furnaces, stoves, water heaters or other appliances that have a pilot light or other ignition source because they can ignite gasoline vapors.

#### **BURNS AND FIRES**

The muffler, muffler guard and other parts of the engine become extremely hot during the operation of the engine. These parts remain extremely hot after the engine has stopped.

- Never remove the muffler guard from the engine.
- Never touch the muffler guard because it is extremely hot and will cause severe burns.
- Never touch parts of the engine that become hot after operation.
- Always keep materials and debris away from the muffler guard and other hot parts of the engine to avoid fires.

#### **CHILDREN AND BYSTANDERS**

Tragic accidents can occur if the operator is not alert to the presence of children and/or bystanders. Never assume that others will remain where you last saw them.

- Keep the area of operation clear of all persons, especially small children, and pets.
- Keep children under the watchful care of a responsible adult.
- Be alert and turn machine off if children enter the area. Shut off engine by pushing down the throttle lever, located on the engine to the **OFF** position.
- Before and while moving backwards, look behind and down for small children.
- Never allow children to operate the machine.
- Use extra care when approaching blind corners, shrubs, trees, or other objects that may obscure vision.

## SERVICE

- Always stop the engine whenever you leave the equipment, before cleaning, repairing, or inspecting the unit. Engine should be turned off and cool. Never make adjustments or repairs with the engine (motor) running. Shut off engine by pushing down the throttle lever, located on the engine to the **OFF** position.
- Disconnect the spark plug wire and keep the wire away from the plug.
- Always wear eye protection when you make adjustments or repairs.
- Keep all nuts and bolts tight and keep equipment in good condition.
- Never tamper with safety devices. Check their proper operation regularly.
- To reduce fire hazard, keep machine free of grass, leaves or other debris build-up. Clean up oil or fuel spillage. Allow machine to cool before storing.
- When servicing or repairing the machine, do not tip the machine over or up unless specifically instructed to do so in this manual. Service and repair procedures can be done with the machine in an upright position. Some procedures will be easier if the machine is on a raised platform or working surface.
- Stop and inspect the equipment if you strike an object. Repair, if necessary, before restarting.
- Clean and replace safety and instruction decals, as necessary.
- To help extend engine life, always have engine air filter mounted and clean.
- Inspect machine before storage. When not in use, shut off engine by pushing down the throttle lever, located on the engine to the **OFF** position. and store indoors in a dry place locked or otherwise inaccessible to children.
- Use only original equipment parts from the factory, including all nuts and bolts.

### 2.4 Safety Decals

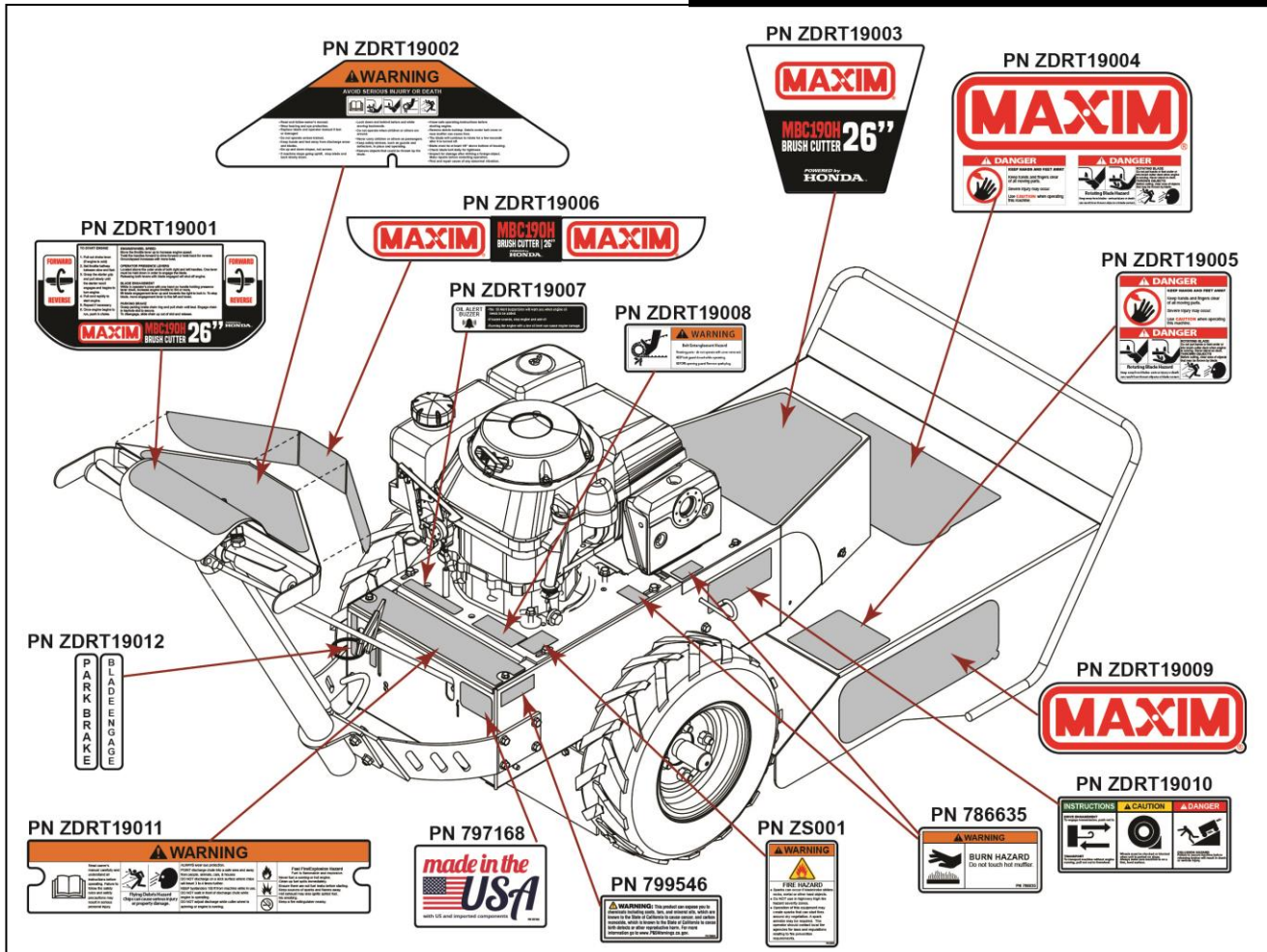
This Brush Cutter has been designed and manufactured to provide you the safety and reliability you would expect from an industry leader in outdoor power equipment manufacturing.

Reading this manual and the safety instructions it contains will provide you with the necessary basic knowledge to operate this equipment safely and effectively. We have placed safety decals on the Brush Mower, to remind you of some of this important information while you are operating the unit.

These important safety decals are illustrated below and are shown here to help familiarize you with the content of the safety messages you will see as you perform normal mowing operations. Please review these decals now, and if you have any questions regarding its meaning or how to comply with these instructions, reread the complete safety instruction text in this manual, or contact your local dealer.

Should a decal become unreadable because of being worn, faded or otherwise damaged during the use of your Brush Cutter; please use the part number information provide to order a replacement label. These decals are easily applied and will act as a constant visual reminder to you, and others who may use the equipment, to follow the safety instructions necessary for safe, effective operation of your Brush Cutter.

ITEM # ZUMBC190H - Complete Decal Sheet



## 2.5 Training

1. Read the Owner's Manual carefully. Be thoroughly familiar with the controls and the proper use of the equipment. Know how to stop the unit and disengage the blade quickly.
2. Never allow children to operate the equipment. Never allow adults to operate the equipment without proper instructions.
3. Keep the area of operation clear of all persons, particularly small children, and pets.
4. Always stay alert. Watch what you are doing and use common sense. Do not operate unit when fatigued.
5. Understand the use of all Brush Cutter controls.

## 2.6 Preparation

1. Thoroughly inspect the area where the equipment is to be used and remove all foreign objects.
2. Disengage the blade before starting the engine by moving the Blade engagement lever to the left and lower.
3. Always wear substantial footwear and long pants. Do not operate the equipment when barefoot or wearing open sandals.
4. Wear ear and eye protection. Eye protection must meet applicable CE requirements. To avoid hearing damage, we recommend hearing protection be worn whenever using the equipment.
5. Handle fuel with care; it is highly flammable.
6. Use an approved fuel container.
7. Never add fuel to a running engine or hot engine.
8. Fill fuel tank outdoors with extreme care. Never fill fuel tank indoors.
9. Replace gasoline cap securely and clean up spilled fuel before starting.
10. Never attempt to make any adjustments while the engine is running. Shut off engine by pushing down the throttle lever, located on the engine to the **OFF** position.

## 2.7 Operation

1. Do not put hands or feet near or under rotating parts.
2. Stop and do not operate if someone approaches.
3. Never leave the engine/mower running and unattended.
  - a. Disengage blade and wait until the blade stops.
  - b. Shut off engine by pushing down the throttle lever, located on the engine to the **OFF** position.
  - c. Set parking brake
4. Exercise extreme caution when operating near gravel drives, walks, or roads. Stay alert for hidden hazards or traffic.
5. Do not carry passengers.
6. Do not operate on slopes if uneasy or uncertain about the machine stability.
7. After striking a foreign object, shut off engine by pushing down the throttle lever, located on the engine to the **OFF** position, thoroughly inspect the mower for any damage, and repair the damage before restarting and operating.
8. Exercise caution to avoid slipping or falling.
9. If the unit should start to vibrate abnormally or make unusual noise, stop the engine by pushing down the throttle lever, located on the engine to the **OFF** position. Allow at least 5 minutes to cool prior to any inspection or service. Vibration is generally a warning of trouble.
10. Before cleaning, repairing, or inspecting, shut off the engine and make certain all moving parts have stopped. Disconnect the spark plug wire and keep the wire away from the plug to prevent accidental starting.





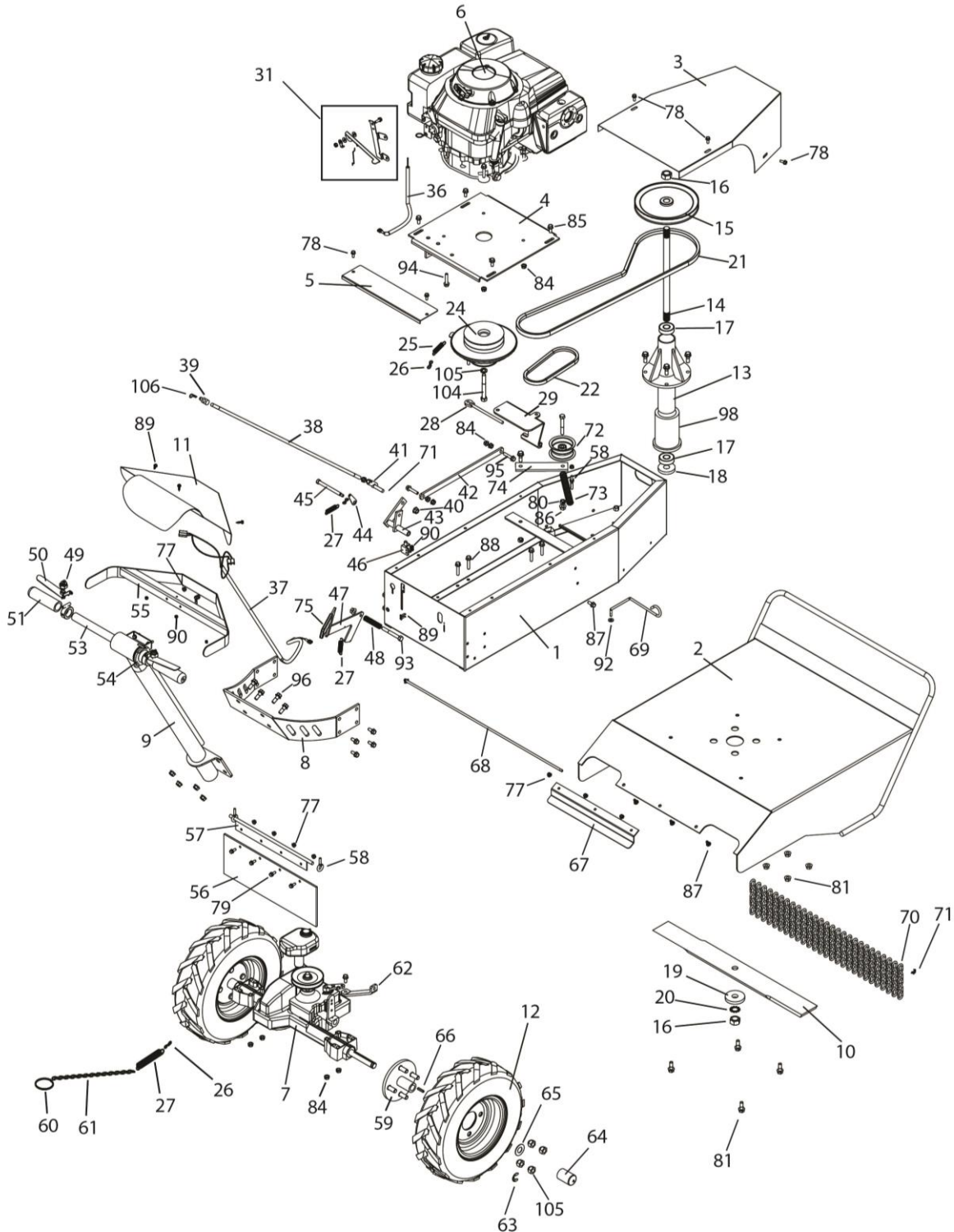
11. Do not run the engine indoors; exhaust fumes are dangerous.
12. Never modify the mower deck or operate the mower without proper guards, or other safety protective devices in place.
13. Keep children and pets away when operating.
14. Do not overload the machine capacity by attempting to mow too fast or cutting too large diameter of brush, saplings.
15. Never operate the machine at high speeds on slippery surfaces. Look behind and use care when backing up.
16. Never operate the mower without good visibility or light.
17. Never allow the mower to ride up on a tree or sapling, in an attempt to cut. If it does not bend over in the normal mowing position, deck on ground, then it is too large to cut.

## **2.8 Storage**

1. Keep machine, attachments, and accessories in safe working conditions.
2. Check blade and engine mounting bolts, and other bolts for proper tightness to be sure the equipment is in safe working condition.
3. Check for Hydraulic leaks.
4. Never store the machine with fuel in the fuel tank inside a building where ignition sources are present, such as hot water and space heaters, clothes dryers, etc. allow the engine to cool before storing in any enclosure.
5. Fuel stabilizer is an acceptable alternative in minimizing and formation of fuel gum deposits during storage. Run engine at least 10 minutes after adding stabilizer to allow the stabilizer to reach the carburetor. It is not necessary to drain either carburetor or fuel tank when using fuel stabilizer.
6. Touch up all rusted or chipped paint surfaces, sand lightly before painting.
7. If possible, store your unit indoors and once sufficiently cooled, cover it to give protection from the elements.

### 3 PARTS BREAKDOWN

#### 3.1 Breakdown





# MBC190H

Ref	Part Number	Description	Qty
1	1110200.MAX	Main Frame Belt Housing	1
2	1110201.MAX	Deck - Blade Guard	1
3	1110202.MAX	Front Cover	1
4	1110203.MAX	Engine Mount Plate	1
5	1110204.MAX	Cover, Rear	1
6	GXV390	Honda, GXV390 Engine	1
7	1110205.MAX	Transaxle - wheel drive	1
8	1110206.MAX	Handle Bracket	1
9	1110207.MAX	Handle Weldment	1
10	1110208.MAX	Cutting Blade, 26"	1
11	1110209.MAX	Handle Cover	1
12	1110144.MAX	Rim, 8 x 3.75-Tire, 480 x 8 4ply	2
13	1110210.MAX	Spindle Housing	1
14	1110211.MAX	Blade Spindle	1
15	1110212.MAX	Pulley, Blade Drive, 8 x 3/4"	1
16	1110213.MAX	Nut, Blade Spindle, 3/4	2
17	1110214.MAX	Blade Spindle Bearing (Top & Bottom)	2
18	1110215.MAX	Blade Washer, Stepped, Upper	1
19	1110216.MAX	Blade Washer, Lower	1
20	1110217.MAX	Washer, Star 3/4"	1
21	1110218.MAX	Blade Belt	1
22	1110219.MAX	Transaxle Belt	1
24	1110220.MAX	Clutch Brake	1
25	1110221.MAX	Clutch Spring	1
26	1110222.MAX	S Hook 1-1/8"	2
27	1110223.MAX	Spring, extension	3
28	1110224.MAX	Anti-rotation Rod	1
29	1110225.MAX	Anti-rotation Bracket	1
30	1110226.MAX	Spacer, Spindle	1
31	1110227.MAX	Throttle Lever/Bracket Kit	1
36	1110232.MAX	Wire Harness - Micro SW to Engine	1
37	1110233.MAX	Wire Harness - Safety SW to Micro SW	1
38	1110234.MAX	Control Rod, Wheel Drive	1
39	1110094.MAX	Drive rod End, 3/8-16	1
40	1110109.MAX	Serrated Flange Nut, 3/8-24 Control Rod End	1
41	1110112.MAX	Ball Joint stud, 3/8-24	1
42	1110235.MAX	Connecting rod, Transaxle	1
43	1110236.MAX	Control Rod Pivot Bracket	1
45	1110237.MAX	Shoulder Bolt, 3/8 x 3 3/4"	1
46	1110238.MAX	Microswitch, Blade Engage safety	1
47	1110239.MAX	Blade Engagement Lever	1
48	1110240.MAX	Compression Spring, Blade Engage Handle	1
49	1110052.MAX	Safety Switch, Handlebar (Black, normally Closed)	2
50	1110065.MAX	Drive Control safety Paddle	2
51	1110093.MAX	Handle Grip, 7/8"	2
53	1110042.MAX	Handlebar	1
54	1110241.MAX	Drive Control Stop Collar	2
55	1110242.MAX	Handle Cover Bracket	1
56	1110243.MAX	Debris Safety Flap	1
57	1110244.MAX	Debris Flap Hinge	1
58	1110245.MAX	Eye Bolt, 1/4-20 x 2	3
59	1110246.MAX	Wheel Hub	2
60	1110247.MAX	Split ring, 2"	1
61	1110248.MAX	Park Brake Chain	1
62	1110249.MAX	Transaxle Support Bracket	1
63	1110250.MAX	E-clips	2
64	1110251.MAX	Caps, Axle	2
65	1110252.MAX	Hub Washer	2
66	1110253.MAX	Key, 3/16 x 2 1/4"	2
67	1110254.MAX	Skid Plate	1
68	1110255.MAX	Rod, Deck chain retainer	1
69	1110256.MAX	Rod, Freewheel Engage	1
70	1110257.MAX	Deck Chain - 5-link	27
71	1110061.MAX	Cotter Pin, 1/8 x 1 1/4"	3
72	1110258.MAX	Belt Idler Pulley	1
73	1110259.MAX	Idler Pulley Spring	1
74	1110260.MAX	Idler Pulley Arm	1
75	1110261.MAX	Grip, 1/4 x 1 Handle	1
76	1110054.MAX	Valve Stem	2
77	1110073.MAX	Serrated Flange Nut 1/4-20	10
78	1110075.MAX	Serrated Flange Bolt 1/4-20 x 1/2"	11
79	1110262.MAX	Flange bolt, 1/4-20 x 3/4	5
80	1110080.MAX	3/8" Nylon Lock Nut	2
81	1110263.MAX	Flange Bolt 3/8-16 x 1	4
84	1110085.MAX	Serrated Flange Nut 5/16-18	24
85	1110265.MAX	Flange Bolt, 5/16-18 x 3/4	16
86	1110113.MAX	Serrated Flange Nut 3/8-16	8
87	1110266.MAX	carriage bolt, 1/4-20 x 3/4	3
88	1110267.MAX	5/16-18 x 2 1/4 flange Bolt	4



# MBC190H

89	1110268.MAX	8-32 x 5/8 Truss Head Mach screw	5	98	1110277.MAX	Collar, Head	1
90	1110269.MAX	8-32 Nylon Locknut	5	99	1110278.MAX	washer, 7/16 lock	1
91	1110270.MAX	1/4-20 x 1 1/2 Flange Bolt	1	100	1110279.MAX	Bushing, 3/8 Control Rod Pivot	1
92	1110271.MAX	1/4" Flat washer	1	101	1110280.MAX	S-Hook, 1-7/8"	1
93	1110272.MAX	HH Bolt, 3/8-16 x 3	1	102	1110281.MAX	Grease Fitting - Spindle Housing	1
94	1110273.MAX	HH bolt 5/16-24 x 1	2	104	1110282.MAX	Bolt, 7/16-20 x 3 1/2	1
95	1110274.MAX	HH Bolt, 5/16-18 x 1 1/2	3	105	1110283.MAX	Lug Nut - 1/2"	8
96	1110275.MAX	Flange Bolt 3/8-16 x 3/4	4	106	1110095.Max	Hairpin Cotter 1/4"	1
97	1110276.MAX	Nut, 1/4-20 Reversable Lock	1		ZUMBC190H	Decal Sheet	1



### 3.2 General Information

Engine	Honda GXV390, 389cc
Transmission	Hydro transaxle w/Enhanced Traction Control
Blade Drive	V-Belt
Engagement	Manual clutch (self-Adjusting)
Tire Size	4.80/4.00 - 8 Pneumatic Bar Lug
Ground Speed	Variable, max. 4 mph
Cutting Width	26"
Blade	Dual Sided, Reversible
Forward/Reverse	Twist Handle Hydro Controls
Operator Present Safety	Yes
Deck	10 Gauge Steel
Engine Start	Recoil
Length	70"
Height	41"
Width	29"
Weight	300 Lbs.
Warranty	12 - Months
Maximum Cut Sapling Diameter	2"
Sealed Spindle Bearings	Yes
Spindle Size	3/4

## 4 ASSEMBLY

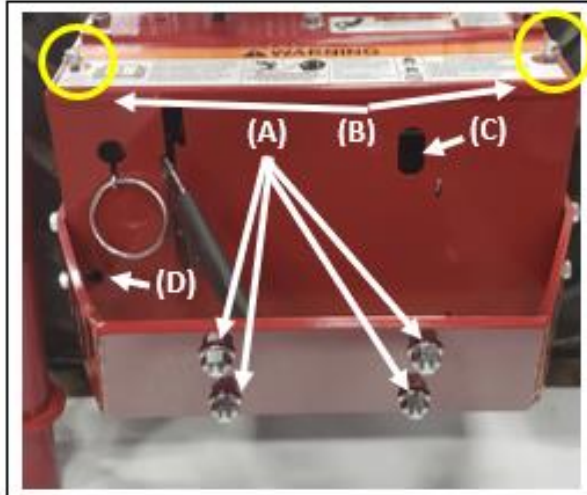
Your Brush Cutter comes fully assembled with the exception of mounting the handle to the frame and the connection of one wire, see next page for further instructions. The engine on this Brush Cutter, is shipped from the factory, **without** engine oil.

**You MUST fill the engine to its proper level, see page 34**

## Maxim Brush Cutter Handle Mounting Instructions

Tools needed: 3/8, 5/16, & 9/16 Wrenches

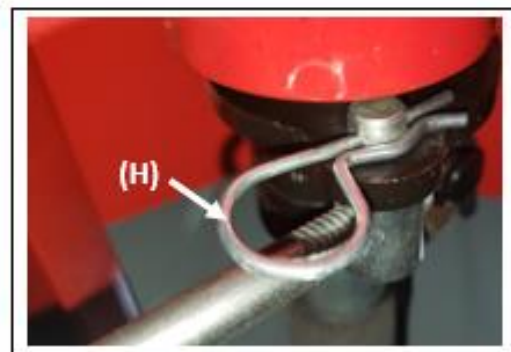
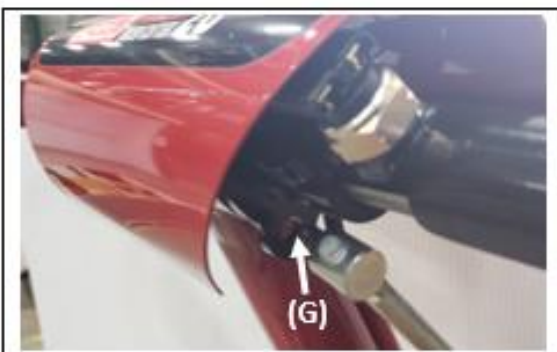
- 1) Remove four nuts (A) from handle mounting bracket, however leave bolts in holes for mounting handle.
- 2) Place handle over four bolts and reinstall nuts, secure tightly.
- 3) Remove two bolts (B) from access cover.
- 4) Insert Steel Hydraulic control rod through hole (C).



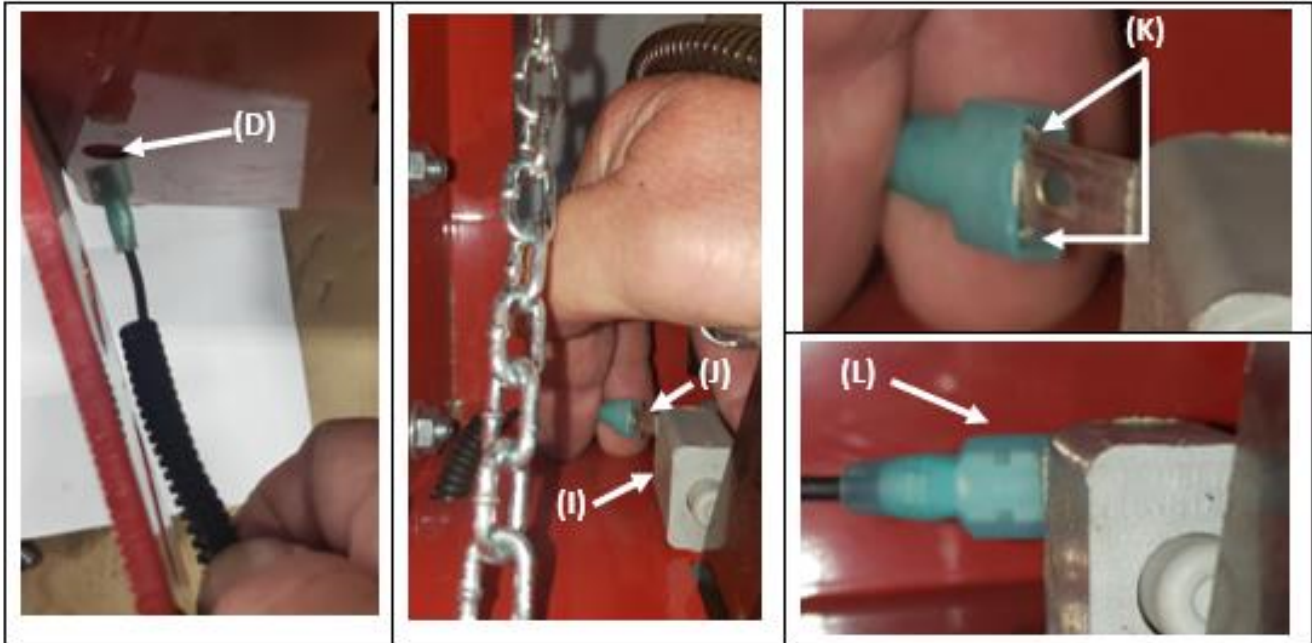
- 5) Connect to threaded ball joint link (E). Thread all the way to locking nut (F) and secure with 9/16 wrench.



- 6) Connect the other end of Hydraulic rod to the Twist handle by inserting it through hole (G) then secure with hair pin (H). There may be minor adjustments needed, should unit "creep". This adjustment would be made and the top connection.



- 7) Thread wire along Handle bracket towards the left, insert through hole (D), also shown on previous page, and connect to switch (I) inside frame. Make certain the switch tab (J) goes into connector correctly as shown (K).
- 8) Carefully push on to the tab. You should feel it "set into place" with a positive connection (L).



- 9) Use cable ties to secure wire along the Handle's lower mounting bracket.



#### 4.1 Final Set-up

##### Engine Oil:

- The engine of your unit has been shipped, from the factory, without engine oil. You **MUST** fill the engine to its proper level, see page 34.
- With engine level, clean area around oil fill tube and remove plug.

- With engine level, oil should be at the upper level of the Oil dipstick. For oil specifications and capacity see your Honda engine manual shipped with unit.
- Fill engine with oil and reinstall engine oil cap and tighten.
- To change engine oil, see the Maintenance section in this manual.

**Fuel:**

- Fill the fuel tank. Use clean, fresh, lead-free gasoline. **DO NOT MIX OIL WITH GASOLINE.**
- Fill fuel tank to bottom of filler neck. Do not overfill. Use fresh, clean, regular unleaded gasoline with a minimum of 87 octane. (Use of leaded gasoline will increase carbon and lead oxide deposits and reduce valve life). Do not mix oil with gasoline. Purchase fuel in quantities that can be used within 30 days to assure fuel freshness.

**⚠ CAUTION**

**CAUTION:** Fill to within 1/2 inch of top of fuel tank to prevent spills and to allow for fuel expansion. If gasoline is accidentally spilled, move machine away from area of spill. Avoid creating any source of ignition until gasoline vapors have disappeared.

Wipe off any spilled oil or fuel. Do not store, spill, or use gasoline near an open flame.

**Gasoline is highly flammable and explosive, you can be burned or seriously injured when handling fuel. Use extreme care when handling gasoline or other fuels. They are flammable and vapors are explosive.**

**Tires:**

- Check tire pressure
- Inflate tires to 39 psi
  - a) Note: New tires are overinflated in order to properly seat the bead to the rim.



## 5 OPERATING CONTROLS

### CAUTION

Keep Blade in the “DISENGAGED” position when starting engine.

#### 5.1 To Start Engine

When starting the engine for the first time or if engine has run out of fuel it will take extra pulls of the recoil starter to move fuel from the tank to the engine.

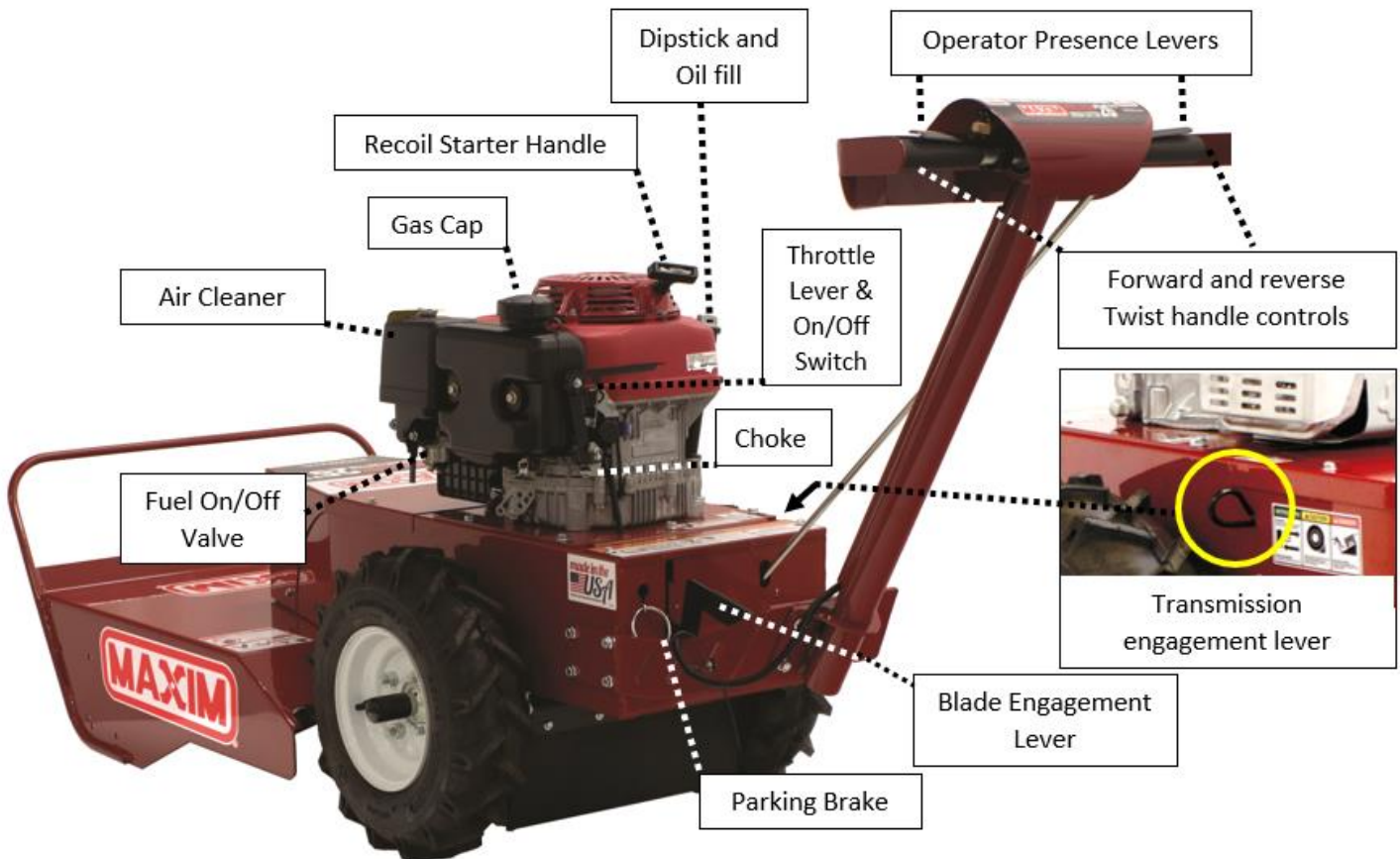
1. If engine is cold, pull-out Choke lever control rod, located on the back of the engine towards the handlebars.
2. Pull Throttle control lever up, located on the back of the engine towards the handlebars halfway between slow and fast.
3. Turn fuel shut-off valve, located on engine, to open position.
4. Grasp recoil starter grip and pull slowly until the starter recoil engages and begins to turn the engine.
5. Pull recoil cord rapidly to start engine. Do not let starter handle/rope snap back against starter.
6. If engine fires, but does not start, push choke control rod to half choke position. Pull recoil starter handle until engine starts.
7. When engine starts, slowly push choke control rod in to “RUN” position as engine warms up.
8. Move throttle control, located on engine, to desired running position.
9. Allow engine to warm up for a few minutes before engaging blade.

### CAUTION

**READ THIS OWNER’S MANUAL AND SAFETY RULES  
BEFORE OPERATING YOUR BRUSH MOWER.**

Compare the illustrations in this manual with your Brush mower, to familiarize yourself with the location of various controls and adjustments. Save this manual for future reference.

## 6 MACHINE IDENTIFICATION COMPONENTS



## 7 OPERATION

### 7.1 Drive operation and Operator Presence Levers

1. With hands on handlebar, gripping the Operator Presence Levers/Micro safety switch tabs, unit can be operated in forward/reverse by twisting handle.
2. Twist handlebar control forward for Forward drive, twist control backward for Reverse drive. Center control for Neutral operation.
3. Groundspeed increases with more twist.

### 7.2 Operator Presence Levers

1. Located above the outer ends of both right and left handles.
2. One lever must be held down in order to engage the blade.
3. Should operator have blade engaged and release both handles, engine will stop.

### 7.3 Blade Engagement

1. While in operator's zone with one hand on handle holding minimum of one presence lever down, increase engine throttle to 3/4 or more.
2. Lift blade engagement lever up and towards the right to lock in.
3. To stop blade, move engagement lever to the left and lower.

### 7.4 Transporting – pushing Brush Cutter without engine running/power

1. Pull Transmission engagement lever out, to disconnect powertrain and to operate manually. See section 8.1 for additional information.
2. Push Transmission engagement lever in, to reconnect powertrain to be Engine driven.

### 7.5 Parking Brake

1. Parking Brake is engaged when the Large loop of the chain is pulled outward until taut.
2. Engage chain in keyhole slot to secure
3. To disengage, slide chain up and out of slot and release allowing chain to move inward.

### 7.6 Cutting/Mowing

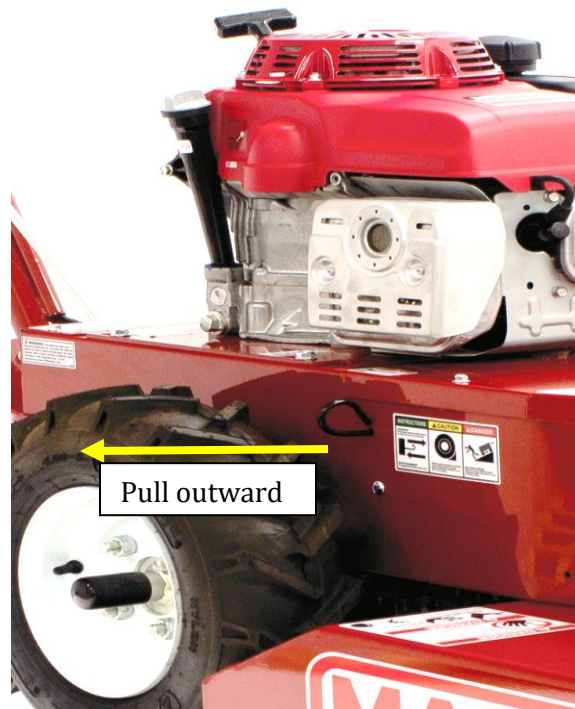
- Only allow responsible individuals who are familiar with the instructions to operate the machine. Do not allow children to operate this machine. Do not allow adults to operate the machine without proper instruction.
- Thoroughly inspect the area where the machine is to be used and remove all foreign objects. Your equipment can propel small objects at high-speed causing personal injury or property damage. Stay away from breakable objects, such as house windows, automobiles, greenhouse, etc.
- Always wear safety goggles or safety glasses with side shields when operating the machine to protect your eyes from foreign objects which can be thrown from the unit.
- Never leave the engine/mower running and unattended. Turn off blade, set parking brake, and stop engine before leaving the machine.
- Operate only in daylight.
- If the equipment should start to vibrate abnormally, stop the engine (motor), push down the throttle lever located on the engine to the **OFF** position.
- Watch for traffic when operating the Brush mower near, or when crossing roads.
- Exercise extreme caution when operating near gravel drives, walks, or roads. Stay alert for hidden hazards or traffic.
- Do not operate on slopes if uneasy or uncertain about the machine stability.
- Do not overload the machine capacity by attempting to cut/mow too fast or cutting too much or too large diameter of brush, saplings.

## 8 Transporting – pushing Brush Cutter manually without engine running/power

### 8.1 Transporting – Free Wheel

1. Pull Transmission engagement lever out to disconnect powertrain and to operate manually.
2. Push Transmission engagement lever in to reconnect powertrain and to be Engine driven.

Pull looped transmission engagement handle out away from frame to dis-engage transmission which will allow mower to Free Wheel



## 9 MAINTENANCE AND LUBRICATION

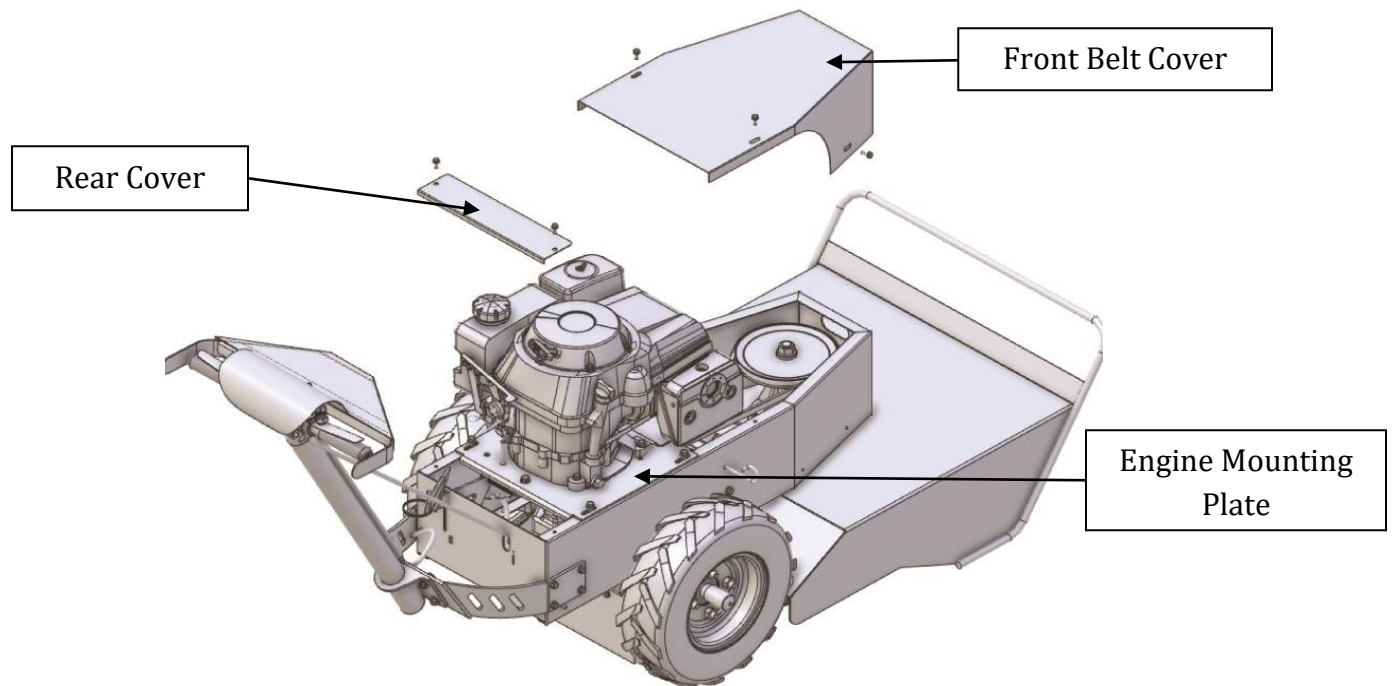
- The warranty on this Brush Cutter does not cover items that have been subjected to operator abuse or negligence. To receive full value from the warranty, the operator must maintain mower as instructed in this manual.
- BEFORE EACH USE
  1. Check engine oil level. See page 34.
  2. Check blade engagement operation.
  3. Check operator's presence levers for proper operation.
  4. Check for loose fasteners.

## 9.1 Mower Blade

1. Make certain that engine is cool, and the spark plug wire is disconnected to prevent accidental starting.
2. Check condition of blade being certain it is not damaged and is sharp.
3. If blade needs to be removed:
  - a. Tip the mower back and block up the front of the deck
  - b. Place one wrench on the hex nut securing blade
  - c. Place a wooden block between the tip of the blade and side of deck to keep the blade from turning.
  - d. NOTE: Blade nut is a Standard Right-Hand Thread
  - e. Inspect blade – Rotate to other side for fresh edge - Sharpen – Or Replace
  - f. Mount blade in reverse order

### CAUTION

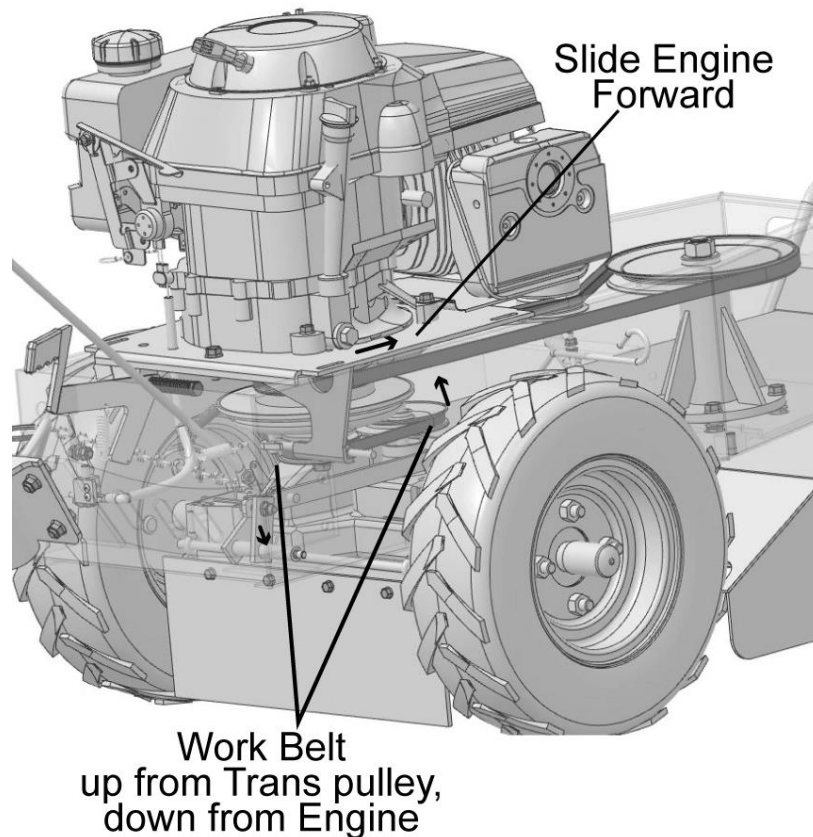
Process to remove blade can be dangerous. Unit is heavy and needs to be secure and stable when tipped back for service. Blade is sharp, take extra caution not to spin blade during removal of center nut.



## 9.2 Mower Transmission belt

1. Make sure engine is cool and the spark plug wire is removed to prevent accidental starting.

2. Loosen only, 4 bolts holding Engine Mounting plate.
3. Remove bolts:
  - a. 4 holding the Front belt cover
  - b. 2 holding Rear cover
4. Remove Front belt cover will help lighting, seeing components and accessibility.
5. Removing small rear panel will help lighting, seeing components and accessibility.
6. Release the tension of the Blade belt by using a 9/16 socket wrench on Idler pulley center mounting bolt and pull back the idler pulley and slip the Blade drive belt off.

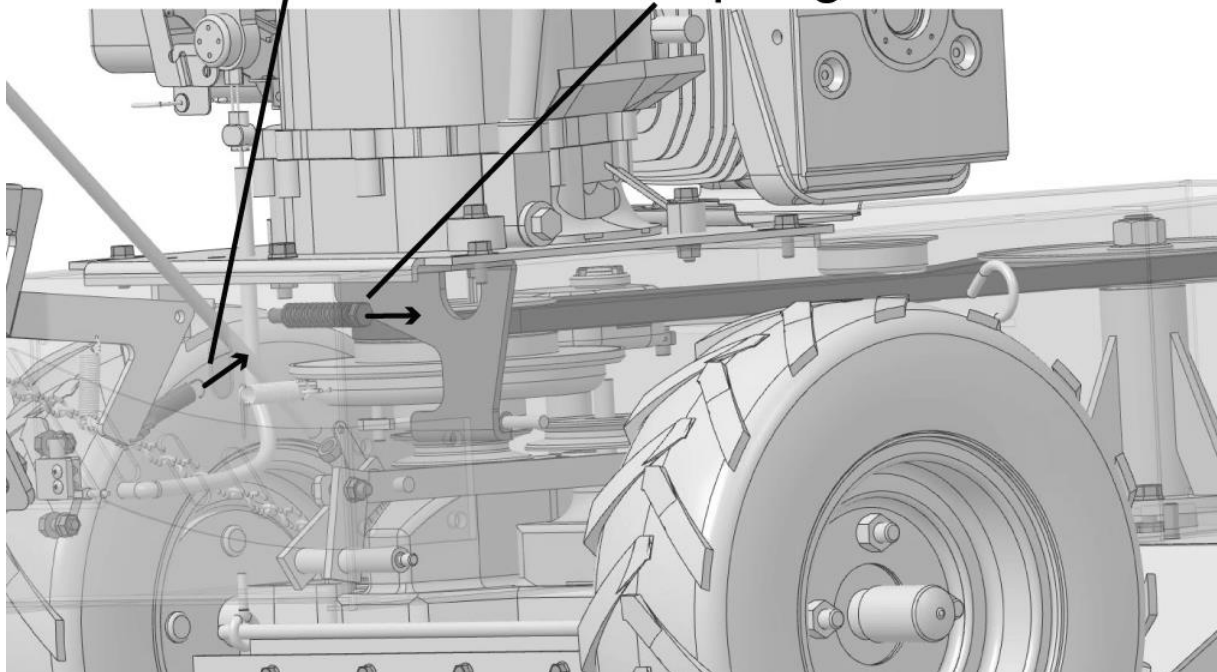


7. Slide Engine mounting plate forward to release Transmission belt tension. From under the unit, slip the belt down over the Engine driven pulley, and up and over the Transmission pulley to entirely remove.
8. Reinstall Transmission belt and place within the Engine driven pulley and the Transmission pulley grooves using the above steps in reverse order.

9. Slide Engine mounting plate towards the rear of the mower, to tighten Transmission Belt. Pull the Engine plate to the rear while tightening the four mounting bolts.
10. Remount small panel and hardware
11. Resecure Belt tension by placing the back side of the Blade belt behind the Idler pulley as noted in step 6.
12. Remount Front belt cover and hardware.

## Release Blade Engagement Spring

## Remove Pivot Bolt & Spring



### 9.3 Mower Blade Belt

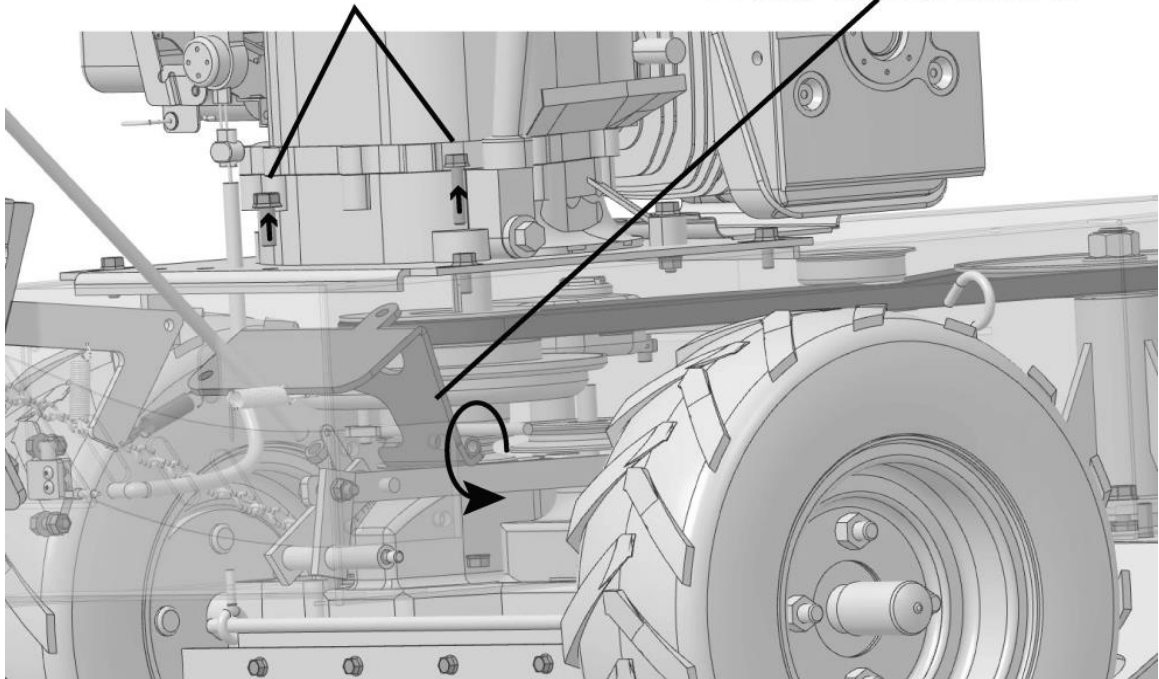
Steps to remove the Blade drive belt:

**First follow steps 1-7, in 9.2 section above.** The Transmission belt needs to be removed as a part of the process ahead of the Blade belt replacement, do so and then follow these steps:

1. Through the Rear cover opening, remove the Pivot bolt and spring engagement lever friction nut, compression spring & bolt located under the Engine mounting plate.
2. Lower Blade engagement lever.
3. Slide Engine mounting plate to the rear and disconnect Blade engagement lever spring from under the unit.

Remove right rear  
Engine mount bolt  
& center bolt

Swivel Anti-rotation  
Bracket to allow  
Belt clearance



center bolt and the right rear engine mounting bolt. It is **NOT** necessary to remove adjuster bolt from the Clutch to the Anti rotation bracket.

5. Lower Blade belt, over clutch and guide it around the Anti rotation bracket to remove.
6. It may be necessary to rotate the top of the Anti-rotation bracket towards the back, until there is enough space to remove the belt from the clutch.
7. Reinstall Blade belt into clutch pulley groove and in reverse order, reassemble – along with remounting the Anti rotation bracket.
8. Re-mount the Blade Engagement spring.
9. Reinstall the Blade engagement lever, friction nut, compression spring & bolt. Tighten only enough for friction slippage.
10. Slide Engine mounting plate forward and install Transmission belt.
11. Slide Engine mounting plate towards the rear of the mower, to tighten Transmission Belt. Pull the Engine plate to the rear tightening the Transmission belt as you tighten the four mounting bolts.
12. Make certain the Blade belt goes around both the clutch and the front blade pulley.
13. Using a 9/16 socket wrench on Idler pulley center mounting bolt, pull back the idler pulley and slip the belt into place with the Idler pulley running on the back side of the Blade belt. Once in position release wrench and allow the Idler pulley/bracket spring to hold it tight.
14. Replace covers and hardware to complete belt replacement.



#### 9.4 Mower Blade Belt tension

1. The tension of the Blade drive belt, between two pulleys should be adjusted to, with a ten-pound pull, have a deflection of ½”

#### 9.5 Cleaning your Brush Cutter

**⚠ IMPORTANT:** If the engine has been running, allow it to cool for at least half an hour before washing.

1. Wash the Brush Cutter, including the underside, after use. Also clean under the deck cover. Allow the mower to dry before use.
2. Use Compressed air and/or wash the engine by hand and be careful to prevent water or debris from entering the air cleaner.

**⚠ NOTE:** Do not use a garden hose or pressure washing equipment, it can force water into the air cleaner. Water in the air cleaner will soak the filter element and can enter the carburetor or engine cylinder, causing damage.

3. After washing the Brush Cutter, wipe dry.
4. After the mower is clean and dry, touch up any damaged paint and coat other unpainted areas with a light film of oil.

#### 9.6 Cleaning the Cooling System

1. Remove blower housing and clean regularly.

**⚠ NOTE:** Grass or chaff may clog cooling system after prolonged service. Continued operation with a clogged cooling system causes severe overheating and possible engine damage.

#### 9.7 Dual Filter Element Air Cleaner

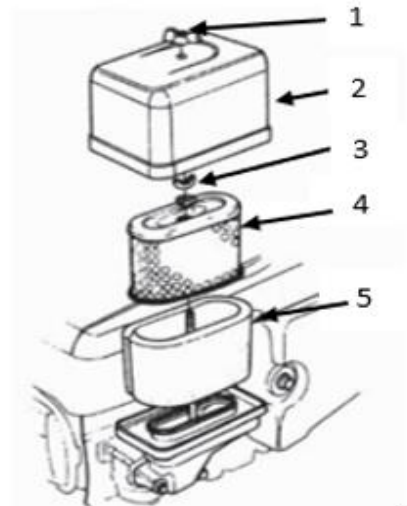
Air Cleaner Check/Cleaning and Replacement

Dual Element Type:

A dirty air filter will restrict air flow to the carburetor reducing engine performance. If the engine is operated in dusty areas, clean the air cleaner more often than specified in the MAINTENANCE SCHEDULE.

Operating the engine without the air filters or with the filters installed loosely, will allow dirt to enter the engine, causing rapid engine wear. Install the air filter securely.

1. Remove the nut (1) and the air cleaner cover (2).
2. Remove the wing nut (3) and the air filter assembly (4-5)
3. Separate the inner filter (Paper) (4) from the outer filter (foam) (5). Carefully check both filters for holes and tears and replace if damaged.
4. Clean filters if they are to be reused.
5. Install the elements in the reverse order of removal.



**9.8 Engine Oil – 1.2 quart, (38.4 oz)**

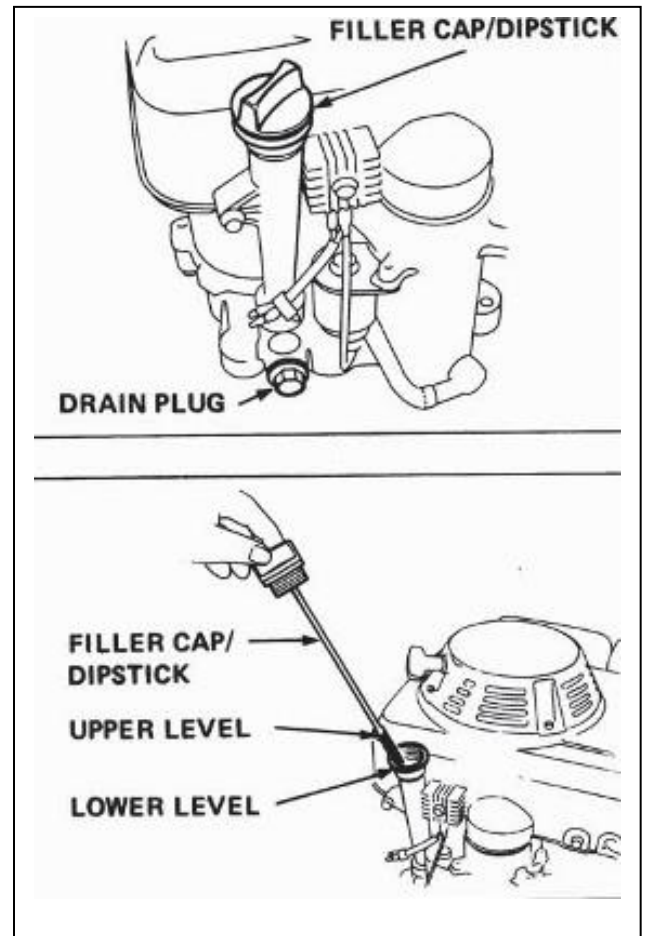
Use only high-quality detergent oil related with API service classification SG, SF. Select the oil's SAE viscosity grade according to your expected temperature.

Use the Oil dipstick and check engine oil level before each use, fill to the upper level of the Oil dipstick as indicated below.

Change the oil after the first 20 hours of operation and then every 100 hours after or at least twice a year.

**TO CHANGE ENGINE OIL**

- 1 Be sure engine is shut off and level.
- 2 Oil will drain more freely when warm.
- 3 Use a funnel to prevent oil spill and catch oil in a suitable container.
- 4 Remove Oil filler cap/dipstick and drain plug.
- 5 After oil has drained completely, replace oil drain plug, and tighten securely.
- 6 Be careful not to allow dirt to enter the engine at Oil filler location.
- 7 Add 12.0-13.5 oz of fresh new recommended oil and fill to the upper level of the Oil dipstick.

**9.9 Muffler**

Do not operate tiller without muffler. Do not tamper with exhaust system. Damaged mufflers or spark arresters could create a fire hazard. Inspect periodically and replace if necessary. Your engine is equipped with a spark arrester screen assembly, remove every 50 hours for cleaning and inspection. Replace if damaged.

### 9.10 Spark Plug

Replace spark plug at the beginning of each season or after every 100 hours of use, whichever comes first. Spark plug gap setting is to .028-0.031" / 0.7-0.8 mm

## 10 Tire Care

- Check that lug nuts are tight
- Maintain 39 pounds of tire pressure.
- Note: New tires are overinflated at the factory in order to properly seat the bead to the rim when newly installed.
- Keep tires free of gasoline or oil which can damage rubber.

	<p><b>CAUTION:</b> When mounting tires, unless beads are seated, over-inflation can cause an explosion.</p>
---	---

### 10.1 Maintenance Schedule

REGULAR SERVICE PERIOD Performed at every indicated month or operating hour interval whichever comes first.		EACH USE	FIRST MONTH OR 20 HRS	EVERY 3 MONTHS OR 50 HRS	EVERY 6 MONTHS OR 100 HRS	EVERY YEAR OR 300 HRS
ITEM						
Engine oil	Check level	○				
	Change		○		○	
Air cleaner	Check	○				
	Clean			○*		
Spark plug	Clean-Readjust				○	
Spark arrester (optional part)	Clean				○	
Valve clearance	Check-Readjust					○
Fuel tank and filter	Clean					○
Fuel line	Check (Replace if necessary)	Every 3 years				

\* Service more frequently when used in dusty areas.

**MAXIM** **Made in the USA**  
with US and Imported Components

Aerators | Edgers | Plows | Sprinklers | Tillers | Trimmers | Accessories

### PRODUCT REGISTRATION FORM

\* Required Field

**Product Registration Form**

First Name:  \*

Last Name:  \*

Address:  \*

Address Line 2:

City:  \*

State:  \*

Zip Code:  \*

Country:  \*

Email:  \*

Phone:  \*

Model #:  \*

Serial Number:  \*

Date of Purchase:  \*

Purchased from:  \*

Address:  \*

City:  \*

State:  \*

Zip:  \*

Please select your application type.

## 11 WARRANTY

### 11.1 Warranty/Product Registration

Please register your product immediately after purchase. You can do that by visiting our website at [www.maximmfg.com](http://www.maximmfg.com) and complete our online product registration.

Or complete the following warranty/production registration form on the next page and return to:

**Maxim**  
Attn: Warranty Registration Department  
20195 South Diamond Lake Road, STE 100  
Rogers, MN 55374



Product Registration Form

**YOUR INFORMATION**

Full Name:

\_\_\_\_\_  
Last First M.I.

Address:

\_\_\_\_\_  
Street Address Apartment/Unit #

\_\_\_\_\_  
City State ZIP Code

Home Phone:

\_\_\_\_\_  
Alternate Phone: \_\_\_\_\_

Email

\_\_\_\_\_

**PURCHASED FROM**

Company:

\_\_\_\_\_

Address:

\_\_\_\_\_  
Street Address Apartment/Unit #

\_\_\_\_\_  
City State ZIP Code

**MODEL INFORMATION**

Purchase Date

\_\_\_\_\_

Application Type

Homeowner  Commercial  Rental

Model (i.e. RMT55H)

\_\_\_\_\_

Serial # (i.e. RMT55HA01234567)

Signature

\_\_\_\_\_

**Register your product online at [www.maximmfg.com](http://www.maximmfg.com)  
Or Fax completed form to 763-428-4821**



20195 South Diamond Lake Road, Suite 100 • Rogers, MN 55374  
 Toll-Free: 800-621-2789 • Website: maximmfg.com • Email: sales@maximmfg.com

**Dear Valued Customer:**

The Maxim Product you just purchased is built with the finest material and craftsmanship. Use this product properly and enjoy the benefits from its high performance. By purchasing a Maxim Product, you show a desire for quality and durability. Like all mechanical equipment this unit requires a due amount of care. Treat this unit like the high quality piece of machinery it is. Neglect and improper handling may impair its performance and is not covered by this limited warranty.

Thoroughly read the instructions and understand the operation before using your product. Always contact Maxim Product Support at 1-800-621-2789 prior to having any service or warranty work performed, as some services performed by parties other than Maxim approved service centers may void this warranty. This limited warranty is in lieu of any other warranty expressed or implied, written or oral and Maxim assumes no other responsibility or liability outside that expressed within this limited warranty.

**Limited Warranty for Maxim Brush Mower:**

**MBC190H**

	<b>Consumer Warranty Period</b>	<b>Commercial Warranty Period</b>
<b>Weldments</b>	1 year from date of purchase by user	1 year from date of purchase by user
<b>Hydro-Gear</b>	1 year from date of purchase by user	1 year from date of purchase by user
<b>Wear Parts</b>	Maxim shall warrant some normal wear items from defects in material or workmanship for a period of 30 days from the date of purchase by user. Unless unused, warranty does not apply to normal wear and tear components including, but not limited to, High impact wear related components such as clutch, pulley, belt, blade and spindle assemblies, micro-switches, seals, bearings, bushings, gaskets, tires, wheel assemblies and lubrication to include hydraulic oil replacement, fuel contamination or from failure to follow instructions contained in the Owner's Manual for the equipment. Wear item warranties are subject to inspection, with warranty level of coverage or to replace/repair is at the sole decision/discretion of Maxim. Routine maintenance items such as lubricants, adjustments, tune ups, and/or damage from operation with loose hardware are not covered under limited warranty.	
<b>Engines</b>	The engine warranty is covered under the terms and conditions as outlined by the engine manufactures warranty contained herein and is the sole responsibility of the engine manufacturer. Normal engine maintenance such as spark plugs, oil changes, filters, adjustments, fuel system cleaning and obstruction due to build up is not covered by this Maxim limited warranty.	

“Consumer use” means personal residential household use by a consumer. “Commercial use” means all other uses, including, but not limited to, use for commercial, income producing or rental purposes or when purchased by a business.

This limited warranty applies to the original purchaser of the equipment (verification of purchase, in the form of a receipt, is the responsibility of the buyer), is non-transferable, and covers parts and labor. Parts will be replaced or repaired at no charge, except when the equipment has failed due to lack of proper maintenance. If a part is no longer available, the part may be replaced with a similar part of equal function. Any misuse, abuse, alteration or improper installation or operations will void warranty. Determining whether a part is to be replaced or repaired is the sole decision of Maxim. Maxim will not provide for replacement of complete products due to defective parts. Any costs incurred due to replacement or repair of items outside of a Maxim approved facility is the responsibility of the buyer and not covered under warranty. Transportation costs to and from service center and/or service calls are the responsibility of the customer.

This limited warranty specifically excludes the following; failure of parts due to damage caused by accident, fire, flood, windstorm, acts of God, applications not approved by Maxim in writing, corrosion caused by chemicals, use of replacement parts which do not conform to manufacturer's specifications, damage related to rodent and/or insect infestation and damage caused by vandalism. Additional exclusions: loss of running time, inconvenience, loss of income, or loss of use, including any implied warranty of merchantability of fitness for a specific use. Also, outdoor power equipment needs periodic parts and service to perform well, and this limited warranty does not cover instances when normal use has exhausted the life of a component or the engine.

This limited warranty does not cover any personal injury or damage to surrounding property caused by failure of any part, misuse or inability to use the product. Alteration of the product, including safety features, shall void this limited warranty.



(This page intentionally left blank)



MBC190H



**Maxim**

*A Brand of Great Northern Equipment Distributing, Inc.*

20195 South Diamond Lake Road

Suite 100

Rogers, MN 55374

[www.maximmfg.com](http://www.maximmfg.com)

800-621-2789